

# MICROFILMED PLAT AND RECORD

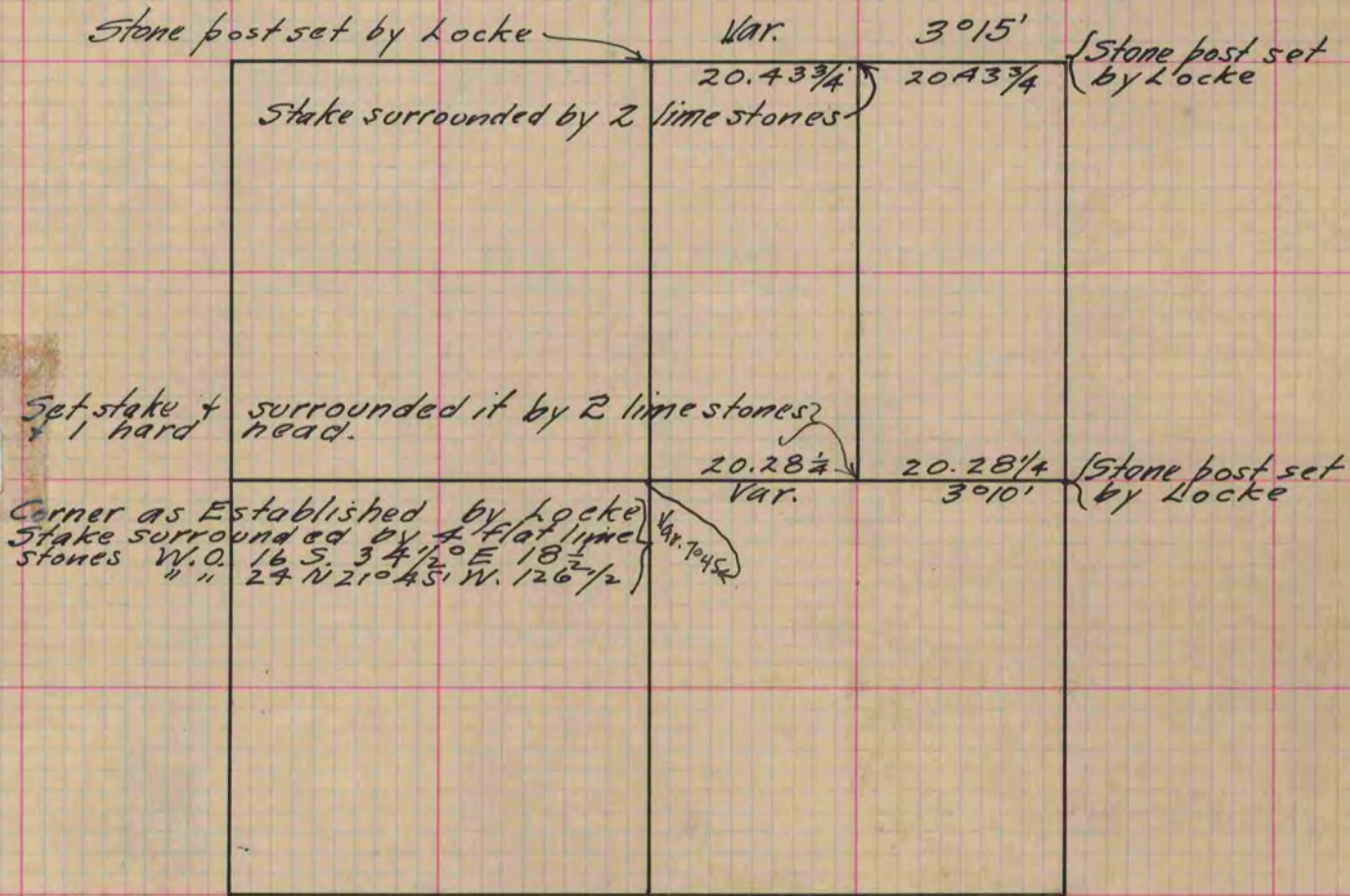
17  
V-2

Of a Survey on Section 12 T 2 R 10 E. of the 4 P. M. in Spring Valley Township  
Rock County, Wisconsin, made January the 26<sup>th</sup> 1870

I hereby certify that the following is a correct record of said survey as made by me.

COUNTY BUILDING  
CITY OF JANESVILLE

(Signed) Edward Ruger } Deputy  
R.H.B. } County Surveyor.



Copied from Page 15 Vol. 2. Original County Surveyors Record