

MICROFILMED

PLAT AND RECORD

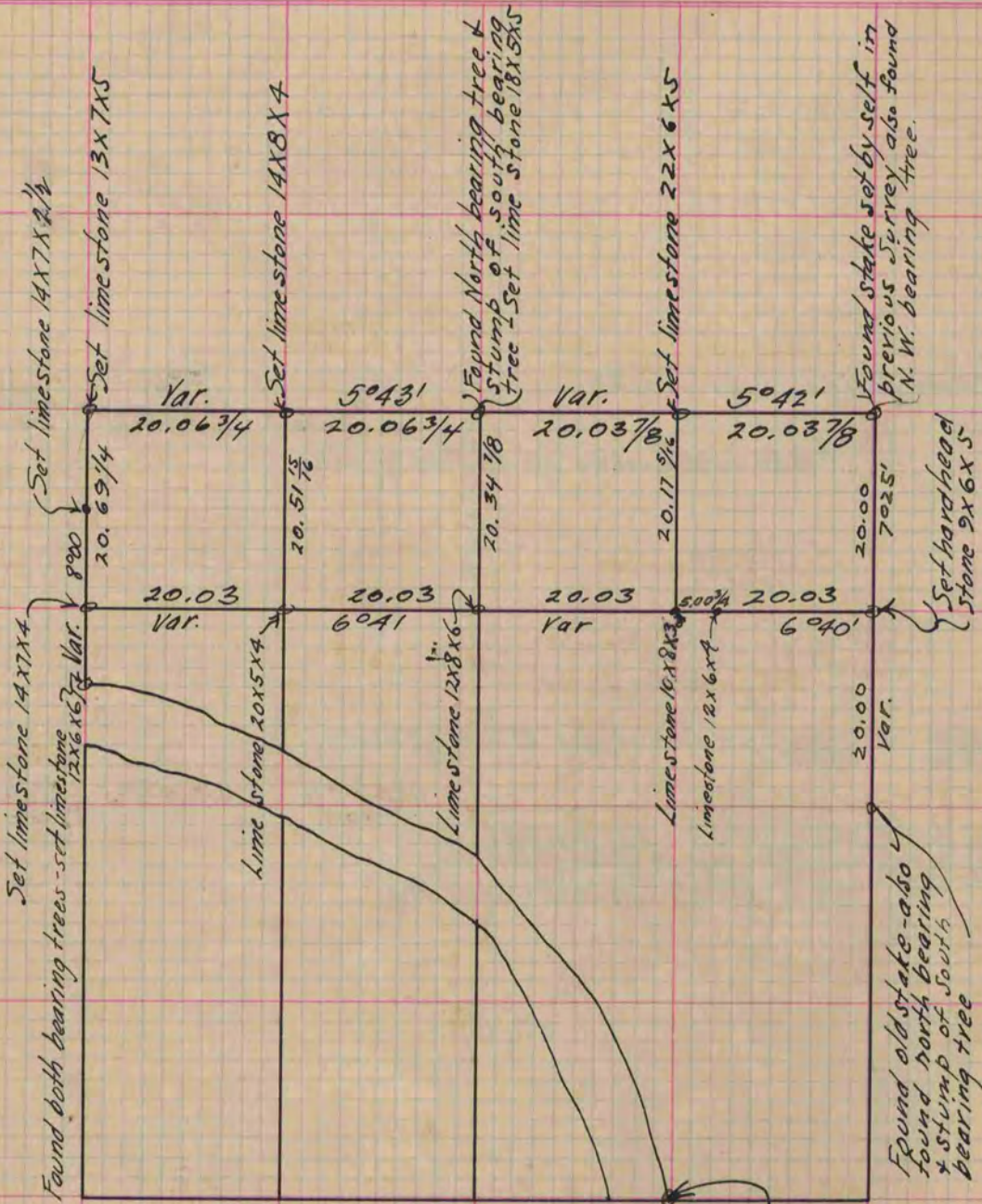
Of a Survey on Section 10 T 3 R 12 E. of the 4 P. M. in Janesville Township

Rock County, Wisconsin, made January + February 12th the 26th + 27th 1870

I hereby certify that the following is a correct record of said survey as made by me.

COUNTY BUILDING CITY OF JANESVILLE

(Signed) Edward Ruger (Deputy County Surveyor) R.H.B.



Found remains of S.E. B.T. stump & established corner from it
 Set lime stone 19x8x5 & surrounded it by 4 burnt
 lime stones - Took B.T.s. Black Oak 14 N. 41° 50' E. 93
 Br. O. 18 5.56° 50' E. 133
 Cut 2 hacks & blazed trees

The Meander Corner on East bank & South line of Section
 was established August 2nd 1876 (Signed) E. Ruger
 R.H.B. Co. Surveyor.

Copied from Page 15 Vol. 2. Original County Surveyors Record