

MICROFILMED

PLAT AND RECORD

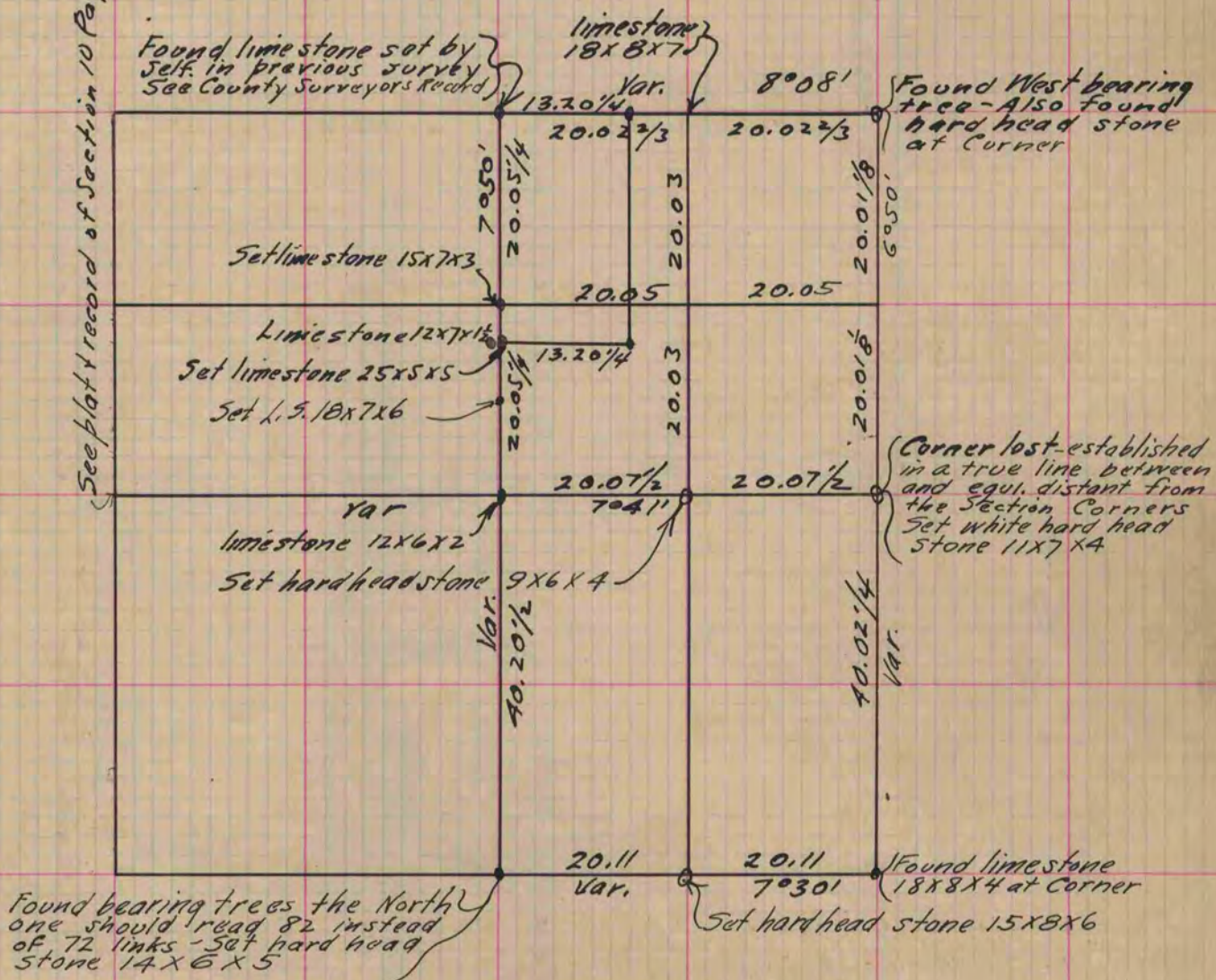
Of a Survey on Section 11 T 3 R 12 E. of the 4 P. M. in Janesville Township
 Rock County, Wisconsin, made ~~November 16th 1869~~ ~~February 11 + 12 1870~~ the 14th 1873

I hereby certify that the following is a correct record of said survey as made by me.

**COUNTY BUILDING
CITY OF JANESVILLE**

(Signed) Edward Roger Deputy
R.H.B. County Surveyor.

See plat & record of Section 10 Page 15 (1844 in book)



At Slawson's S.W. Corner set limestone 12x7x1 1/2 - At the S.W. Corner of the N. 1/2 of the N.E. 1/4 of Sec. 11 Janesville set limestone 15x7x3 - At the pt where the N.E. 1/4 of said Section intersects Slawson's South line set limestone 25x5x5.

Slawson's S.W. corner is 27 1/2 links South + 10 1/2 links West of the S.W. Corner of the N. 1/2 of the N.E. 1/4 of Sec. 11 Janesville - It was established from the bearing tree mentioned in his deed.

Copied from Upper 1/2 of Page 16 Vol. B. Original County Surveyors Record