

PLAT AND RECORD

MICROFILMED

Of a Survey on Section 8 T A R 11 E. of the 4 P. M. in Porter Township

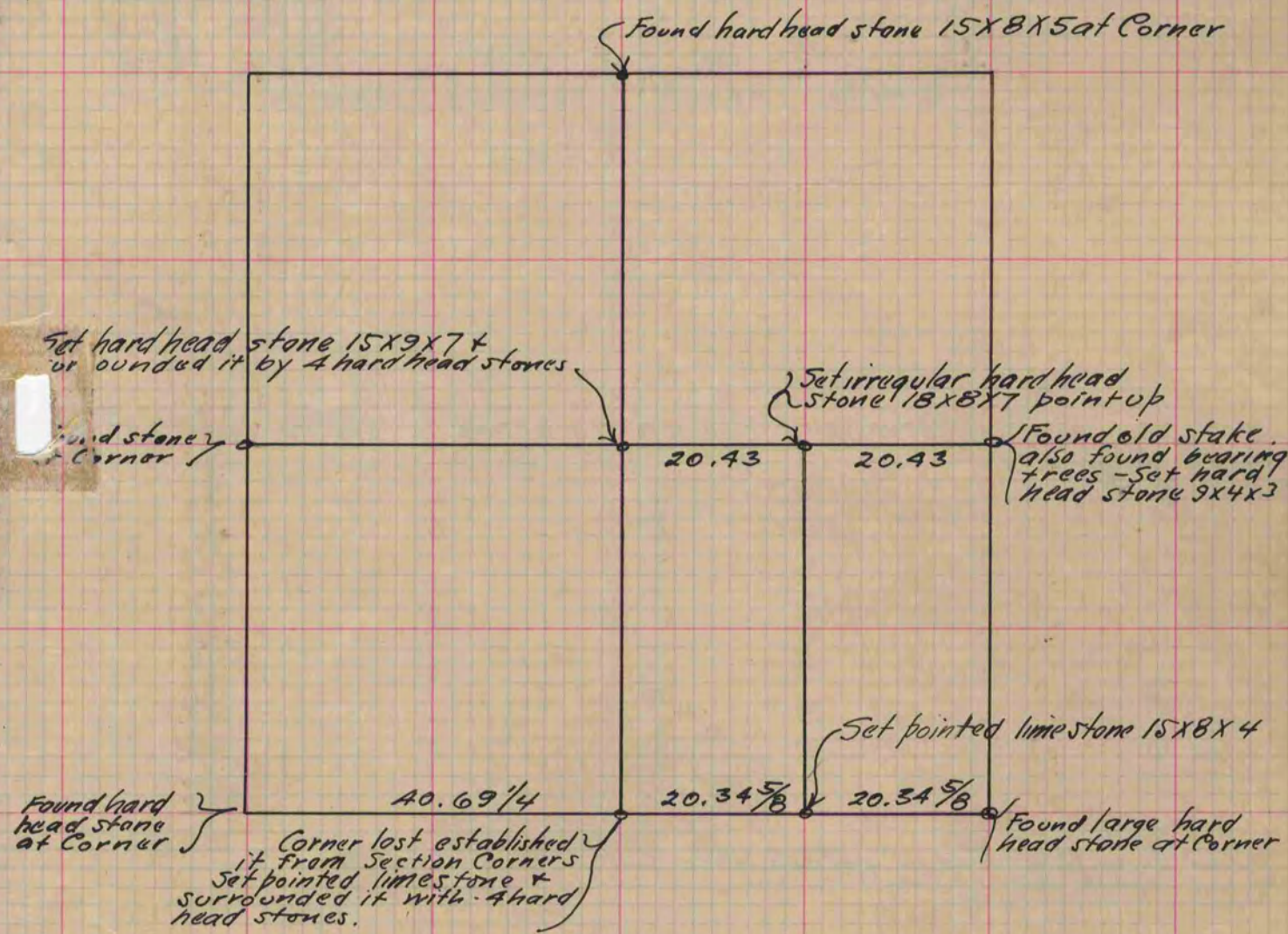
Rock County, Wisconsin, made April the 13 1870

I hereby certify that the following is a correct record of said survey as made by me.

COUNTY BUILDING
CITY OF JANESVILLE

(Signed) Edward Roger
R.H.B.

Deputy
County Surveyor.



Copied from Page 19 Vol. 2 Original County Surveyors Record