

MICROFILMED

PLAT AND RECORD

COUNTY BUILDING
CITY OF JANESVILLE

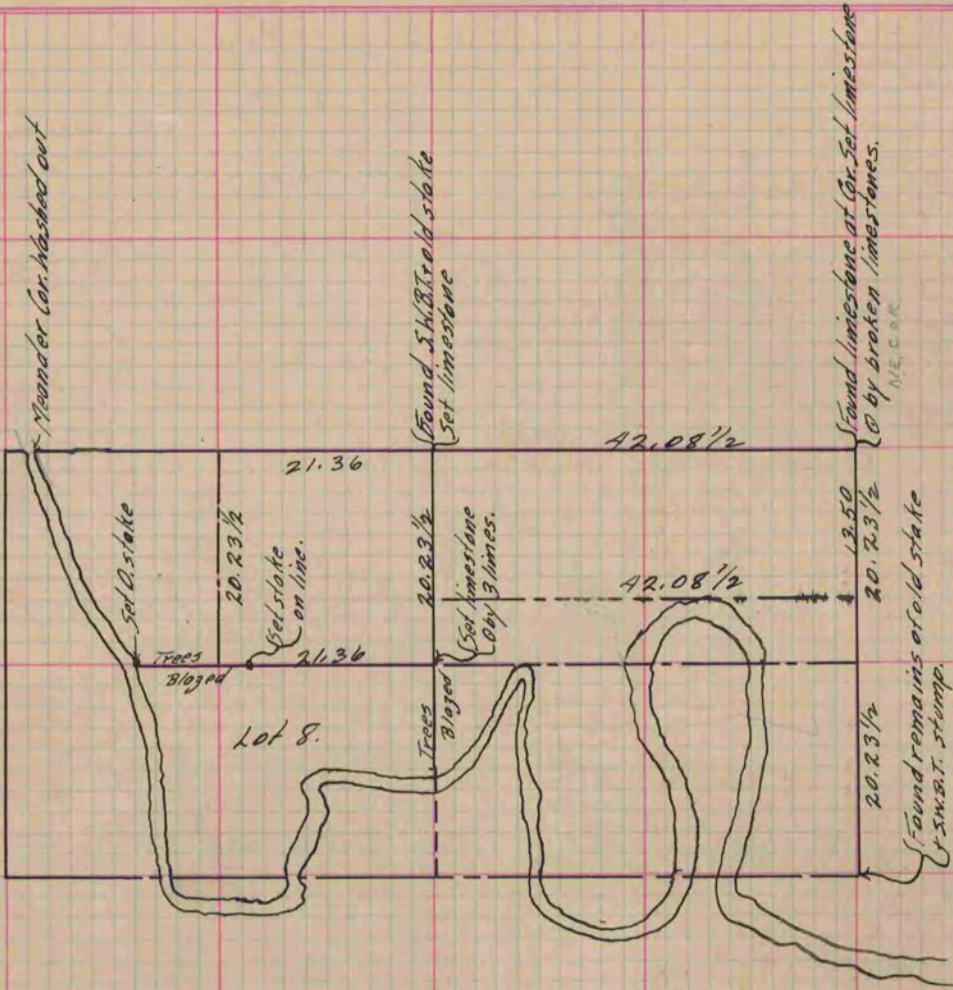
Of a Survey on Section $N\frac{1}{2}$ 20 T 1 R 10 E. of the 4 P. M. in Aron Township

Rock County, Wisconsin, made May the 19th & 20th 1873

I hereby certify that the following is a correct record of said survey as made by me.

(Signed) R. M. Lee
R. M. B.

Deputy
County Surveyor.



Copied from Page 59 Vol. 2 Original County Surveyor's Record.