

PLAT AND RECORD

MICROFILMED

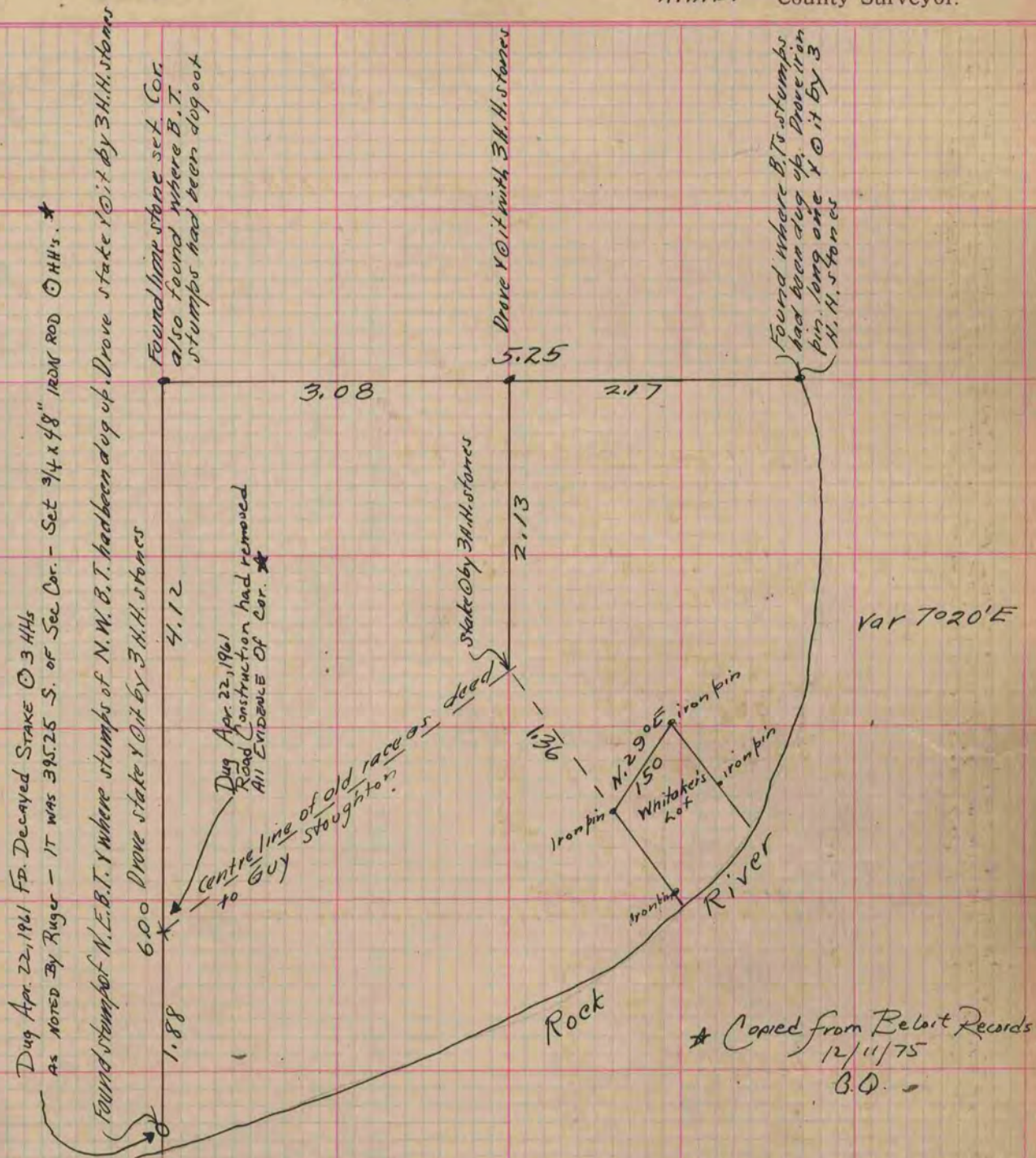
COUNTY BUILDING
CITY OF JANESVILLE

Of a Survey on Section 21 T 4 R 12 E. of the 4 P. M. in Fulton Township

Rock County, Wisconsin, made July the 10 1875

I hereby certify that the following is a correct record of said survey as made by me.

(Signed) Edward Ruger
R.H.B. County Surveyor.



At the point of intersection of the south line of old raceway with the East line of the Whitaker Lot drove stake, also drove witness stake 9 links South on Whitaker's East line. Cot mark on the Black-Smith-shop to show the N.W. corner of the Whitaker lot. At the intersection of the North & South lines of the old raceway with the West line of Section 21 Fulton drove stakes. At the intersection of the N. & S. lines of the old raceway with the line parallel to the West line of Sec. 21 Fulton and 308 chains East therefrom drove stakes.

(Signed) Edward Ruger
R.H.B. County Surveyor

Copied from Page 151 Vol. 2. County Surveyors Record