

MICROFILMED PLAT AND RECORD

303
V-2

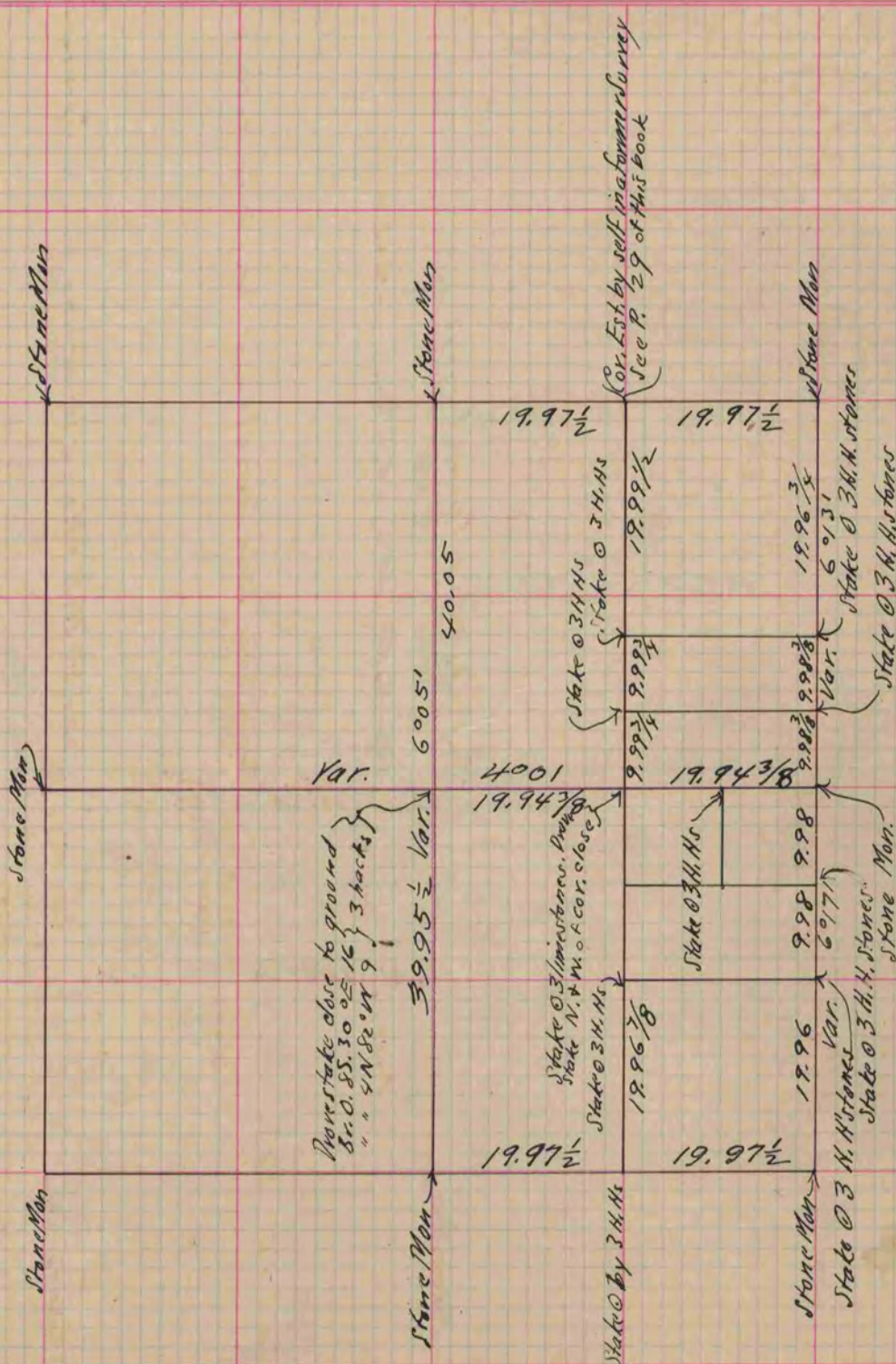
Of a Survey on Section 9 T 3 R 13 E. of the 4 P. M. in Harmony Township
 Rock County, Wisconsin, made January the 20 + 21 1876

COUNTY BUILDING
 CITY OF JANESVILLE

I hereby certify that the following is a correct record of said survey as made by me.

(Signed)

Roger DAB 6/01/89
 County Surveyor.



Copied from P. 157 Vol. 2 Original County Surveyors Record.