

PLAT AND RECORD

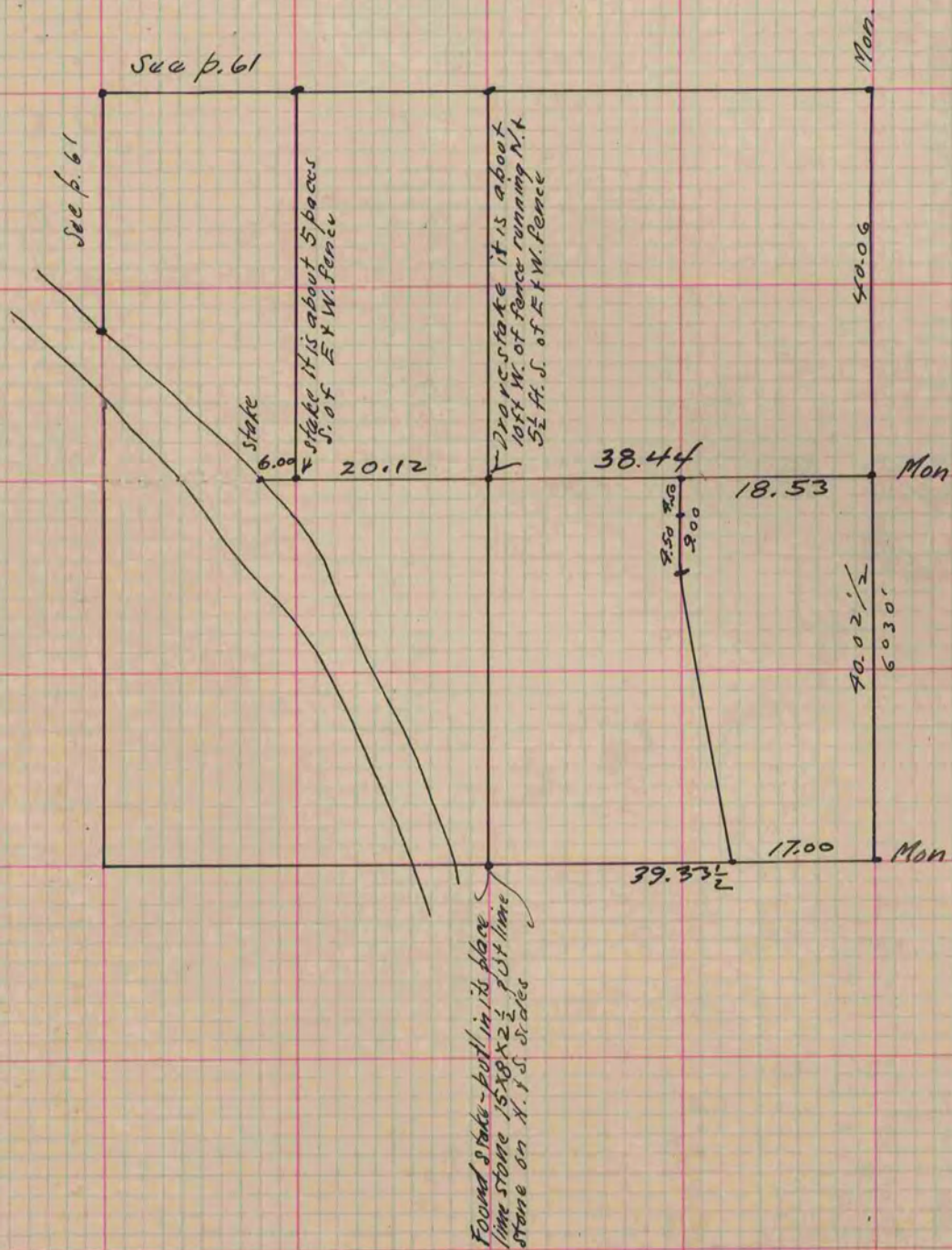
Of a Survey on Section 36 T 2 R 12 E. of the 4 P. M. in Rock Township

Rock County, Wisconsin, made September the 1st 1876

I hereby certify that the following is a correct record of said survey as made by me.

COUNTY BUILDING
CITY OF JANESVILLE

(Signed) Edward Roger
R.H.B. County Surveyor.



Copied from page 170 Vol. 2. County Surveyors Record