

1-2 MICROFILMED

PLAT AND RECORD

Of a Survey on Section 30 & 31 T 2 R 14 E. of the 4 P. M. in Bradford Township

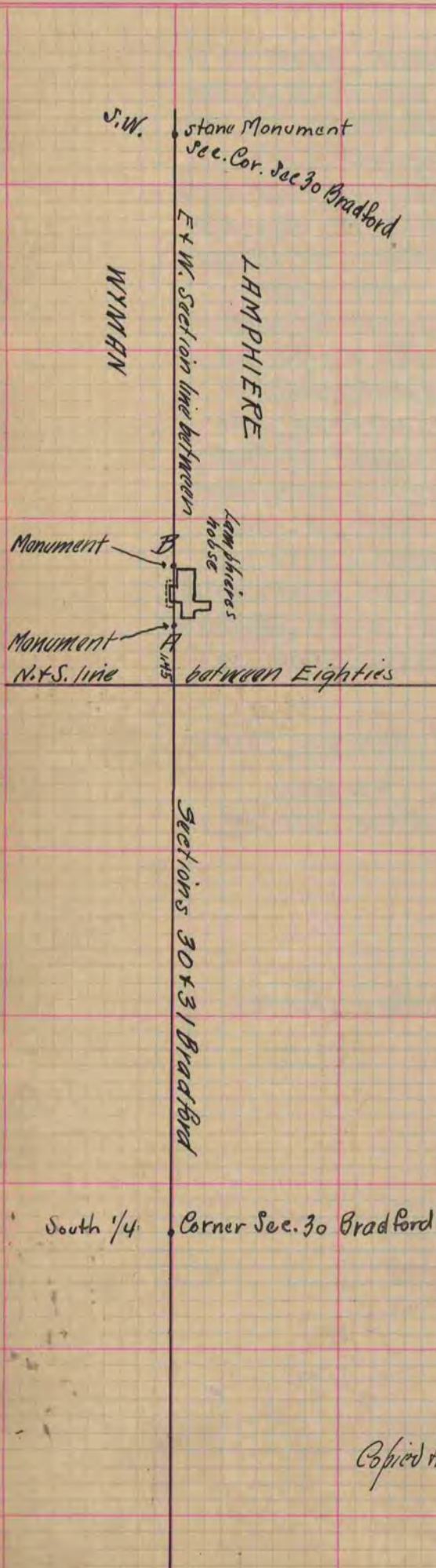
Rock County, Wisconsin, made April the 30 1877

I hereby certify that the following is a correct record of said survey as made by me.

COUNTY BUILDING
CITY OF JANESVILLE

(Signed) Edward Ruger
R.H.B.

County Surveyor.



I hereby certify this to be a Correct Plat; and the following to be a correct record of a Survey made by me April 30th 1877 of the Section line between the South west quarter of section 30 and the North West quarter of Section 31 of the Town of Bradford to ascertain whether any frontage of Mr. Lamphiere's house extended south of said Section line. From the S.W. Cor. and also from the South 1/4 Cor. of Sec. 30. I offsetted South 60 links and run a right line between said offsetted points with an Engineer's Transit, and at determined points in said line opposite and adjacent to either side of the house, then offsetted North from said points 60 links and established Monuments in said Section line at points A. & B. shown on the plat. I found that at the East face of the Main building of Lamphiere's house, said Main part of the house or building extended South of the Section line 5 feet & 3 inches and including the verandah 10 feet & 5 inches and that at the West face of said Main part or building it extended South of the Section line 5 ft & 9 inches and including the verandah 10ft. & 11 inches.

The Mon. at A. consists of a limestone 18" long by 9" wide by 3" thick & by a lot of small H. H. stones. The Mon. is on the Sec. line & 1.45 chains west of line between eighties & 8 1/4 links E. of E. face of E. wing of house produced.

The Mon. at B. consists of a limestone 14" long by 6" wide by 3" thick & by 4 H. H. stones. It is on said Sec. line & 3 ft. & 9" W. of W. face of W. wing of house produced.

Surveyed April 30 - 1877

(Signed) Edward Ruger
R.H.B.

County Surveyor.

Copied from page 176 Vol. 2. County Surveyor's Record