

PLAT AND RECORD

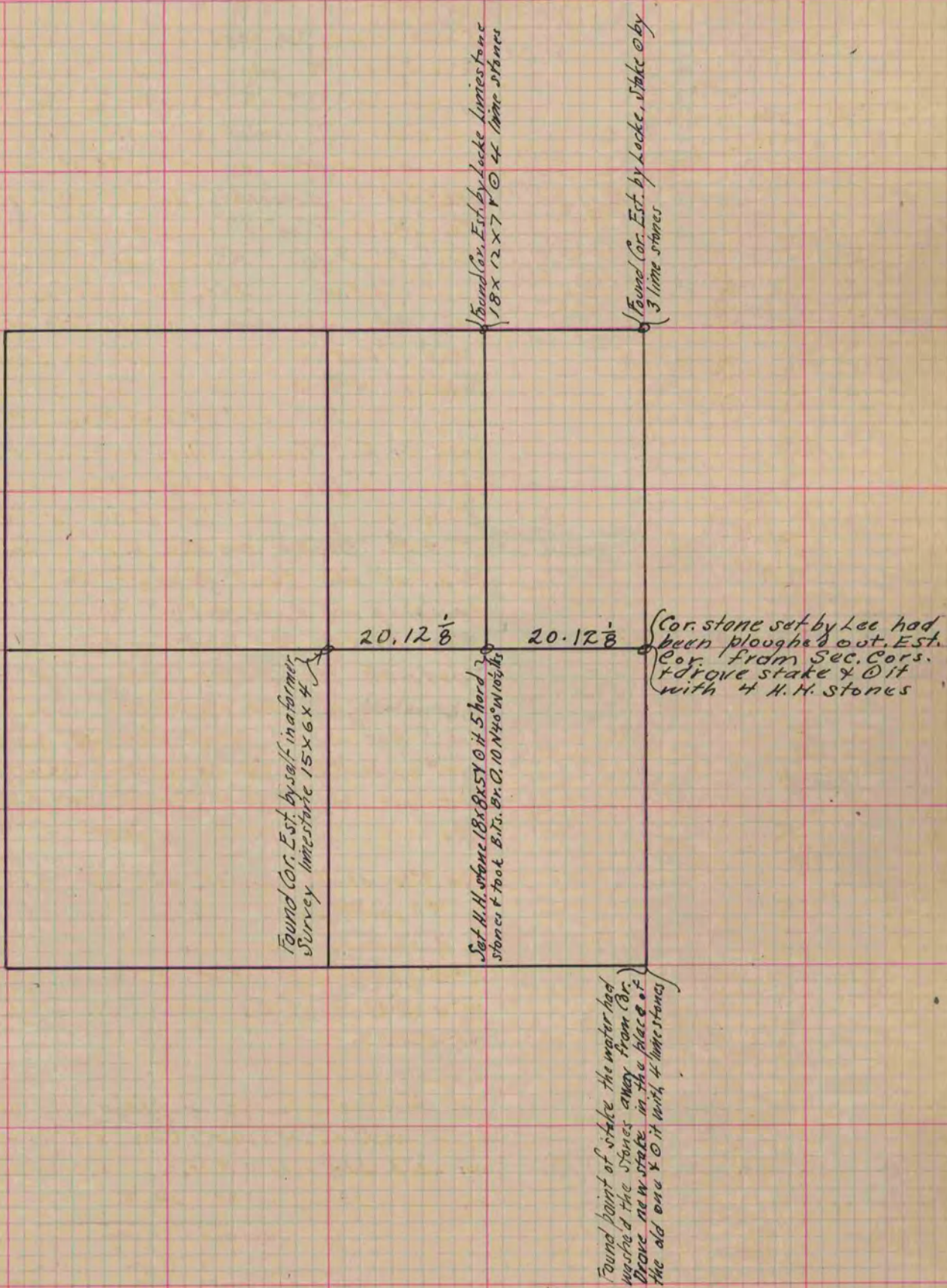
MICROFILMED

Of a Survey on Section 32 T 2 R 14 E. of the 4 P. M. in Bradford Township
Rock County, Wisconsin, made May the 1st 1877

I hereby certify that the following is a correct record of said survey as made by me.

COUNTY BUILDING
CITY OF JANESVILLE

(Signed) Edward Ruger
R. H. B. County Surveyor.



Copied from page 177 Vol. 2. County Surveyors Record