

Of a Survey on Section 34 T 2 R 14 E. of the 4 P. M. in Bradford Township

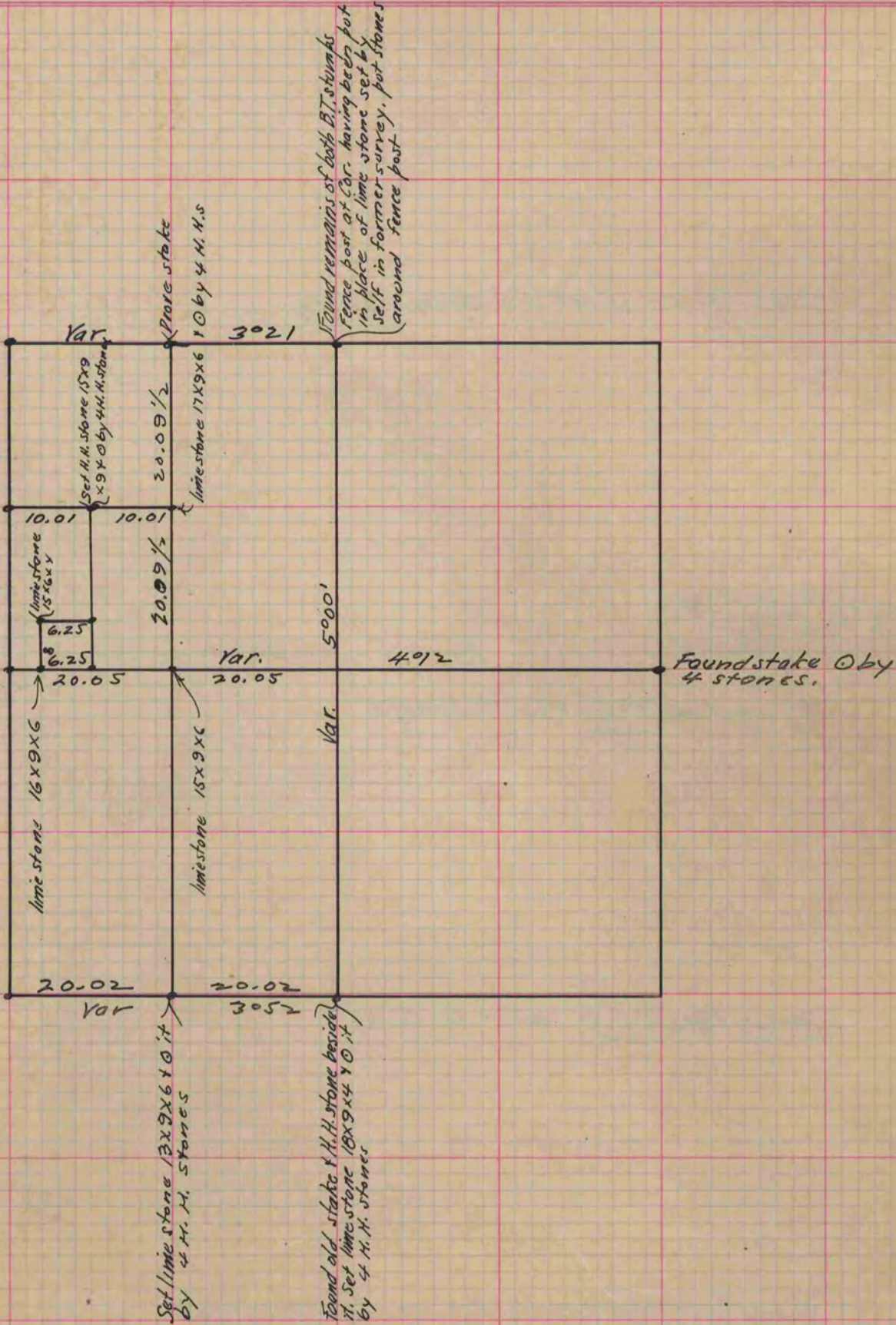
Rock County, Wisconsin, made June the 6th 1878

I hereby certify that the following is a correct record of said survey as made by me.

(Signed) Edward Ruger
R.H.B. County Surveyor.

See Cor's on E. line Sec. 33 on opposite page

See S.E. Cor. of Sec. 33 opposite



Copied from P. 211 Vol. 2. County Surveyors Record.