

PLAT AND RECORD

MICROFILMED

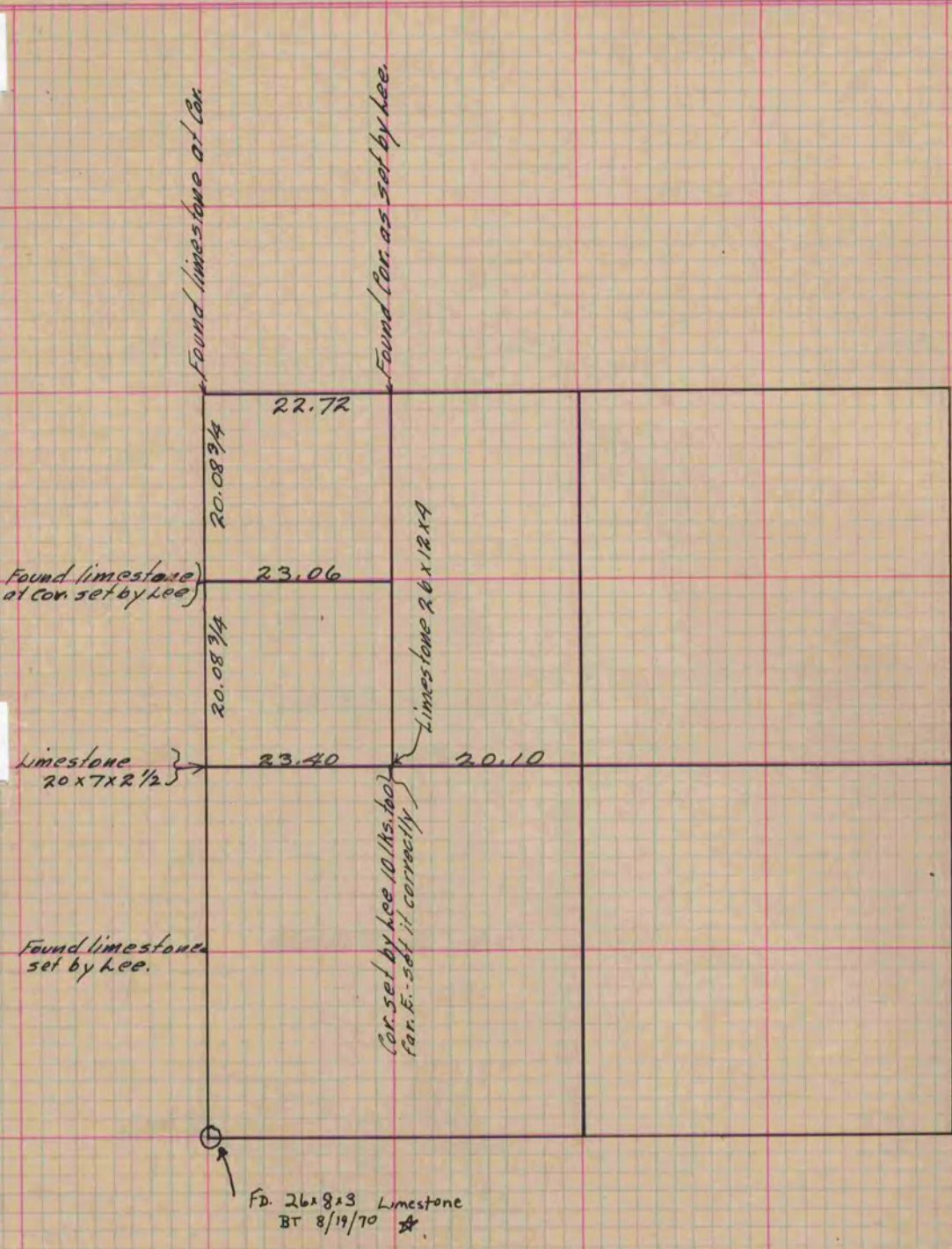
Of a Survey on Section 30 T 2 R 10 E. of the 4 P. M. in *Spring Valley* Township

Rock County, Wisconsin, made *April* the *4th & 5th* 1877

I hereby certify that the following is a correct record of said survey as made by me.

(Signed) Edward Ruger

COUNTY BUILDING
CITY OF JANESVILLE
County Surveyor.



* Copied from Beloit Records
12/11/75 G.D.

Copied from Page 220 Vol. 2 Original County Surveyor's Record.