

V-2
MICROFILMED

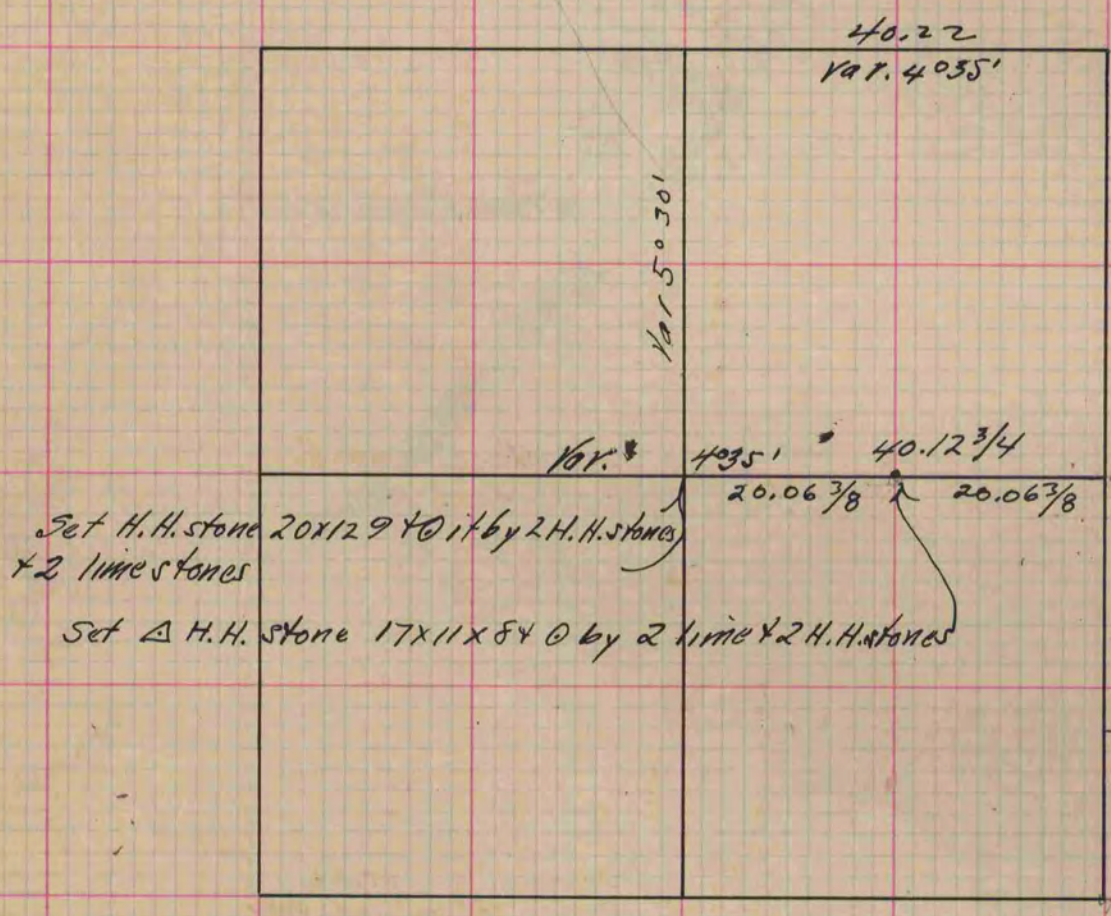
PLAT AND RECORD

Of a Survey on Section 3 T. 2 R. 11 E. of the 4 P. M. in Plymouth Township
Rock County, Wisconsin, made April the 15th 1886

I hereby certify that the following is a correct record of said survey as made by me.

COUNTY BUILDING
CITY OF JANESVILLE

(Signed) Edward Ruger
R.H.B. County Surveyor.



Copied from page 225 Vol. 2. County Surveyors Record.