

274
v-2

MICROFILMED

PLAT AND RECORD

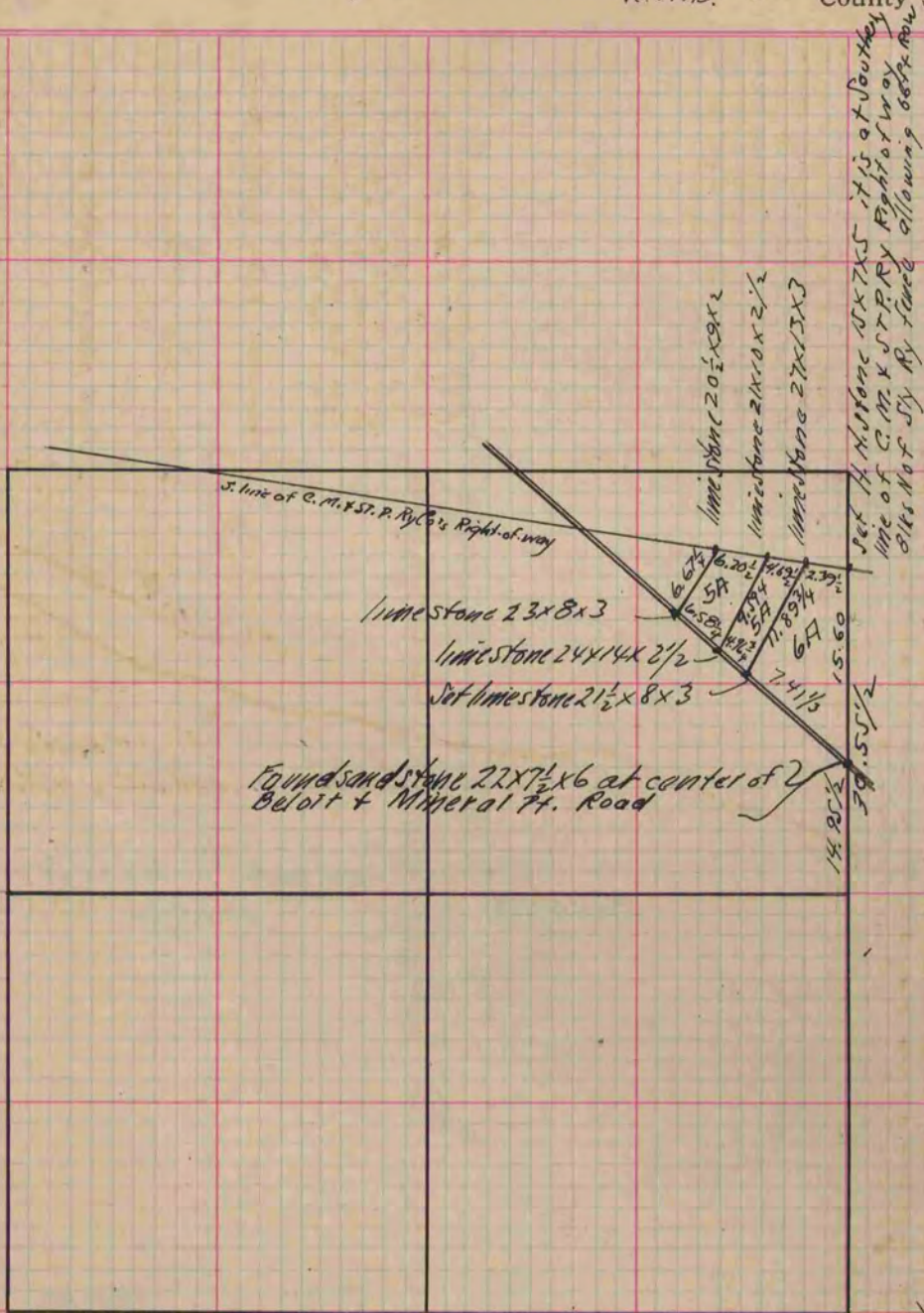
Of a Survey on Section 24 T 2 R 10 E. of the 4 P. M. in Spring Valley Township
Rock County, Wisconsin, made May the 21 1886

I hereby certify that the following is a correct record of said survey as made by me.

COUNTY BUILDING
CITY OF JANESVILLE

(Signed) Edward Reger
R.H.B.

County Surveyor.



(See page 239)

Copied from page 227 Vol. 2, County Surveyors Record.