

PLAT AND RECORD

279
V-2

MICROFILMED

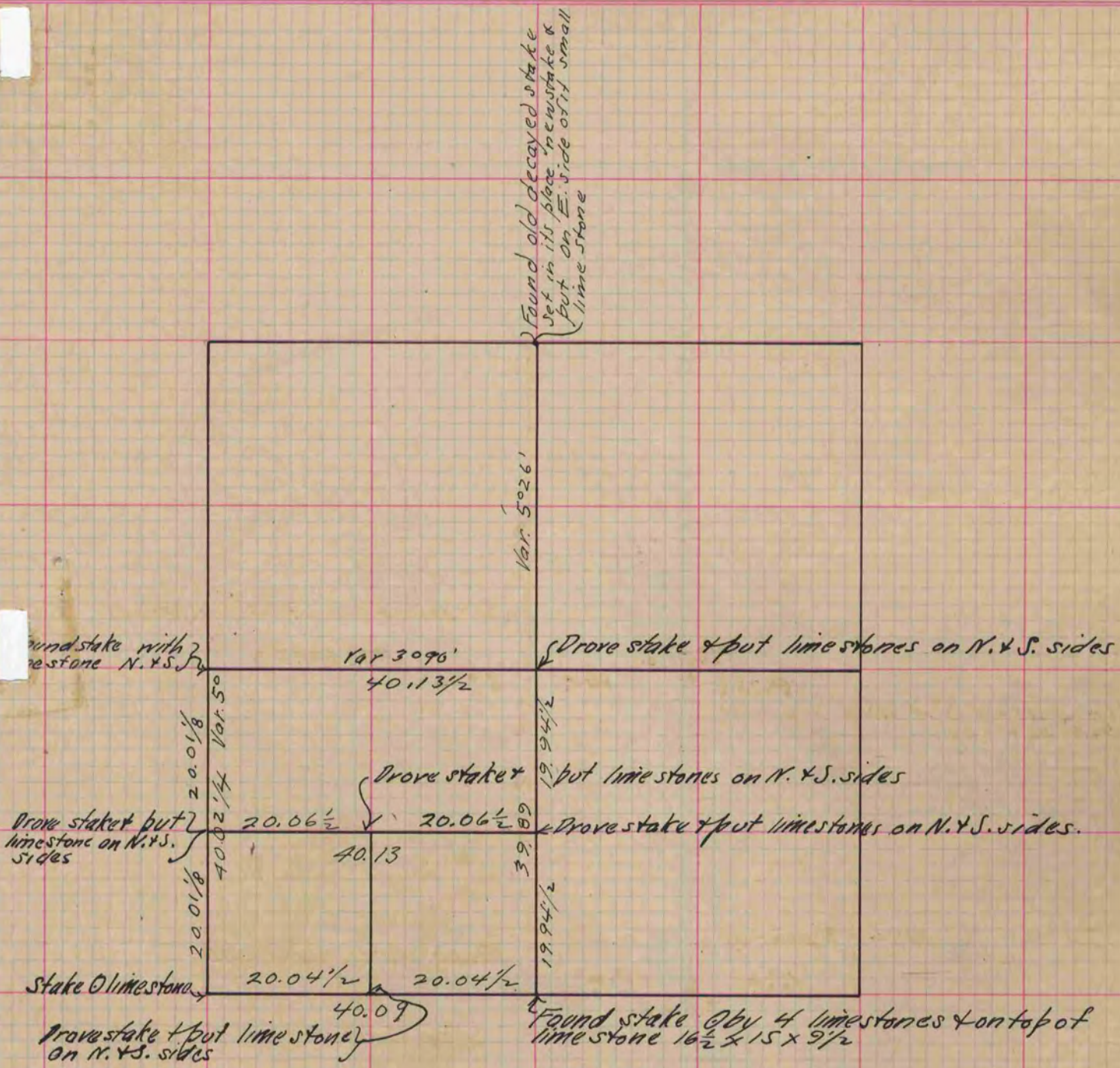
COUNTY BUILDING
CITY OF JANESVILLE

Of a Survey on Section 24 T 2 R 12 E. of the 4 P. M. in Rock Township

Rock County, Wisconsin, made May the 18 1885

I hereby certify that the following is a correct record of said survey as made by me.

(Signed) Edward Ruger
R.H.B. County Surveyor.



Copied from P. 231 Vol. 2. County Surveyors Record.