

MICROFILMED

PLAT AND RECORD

286
V-2

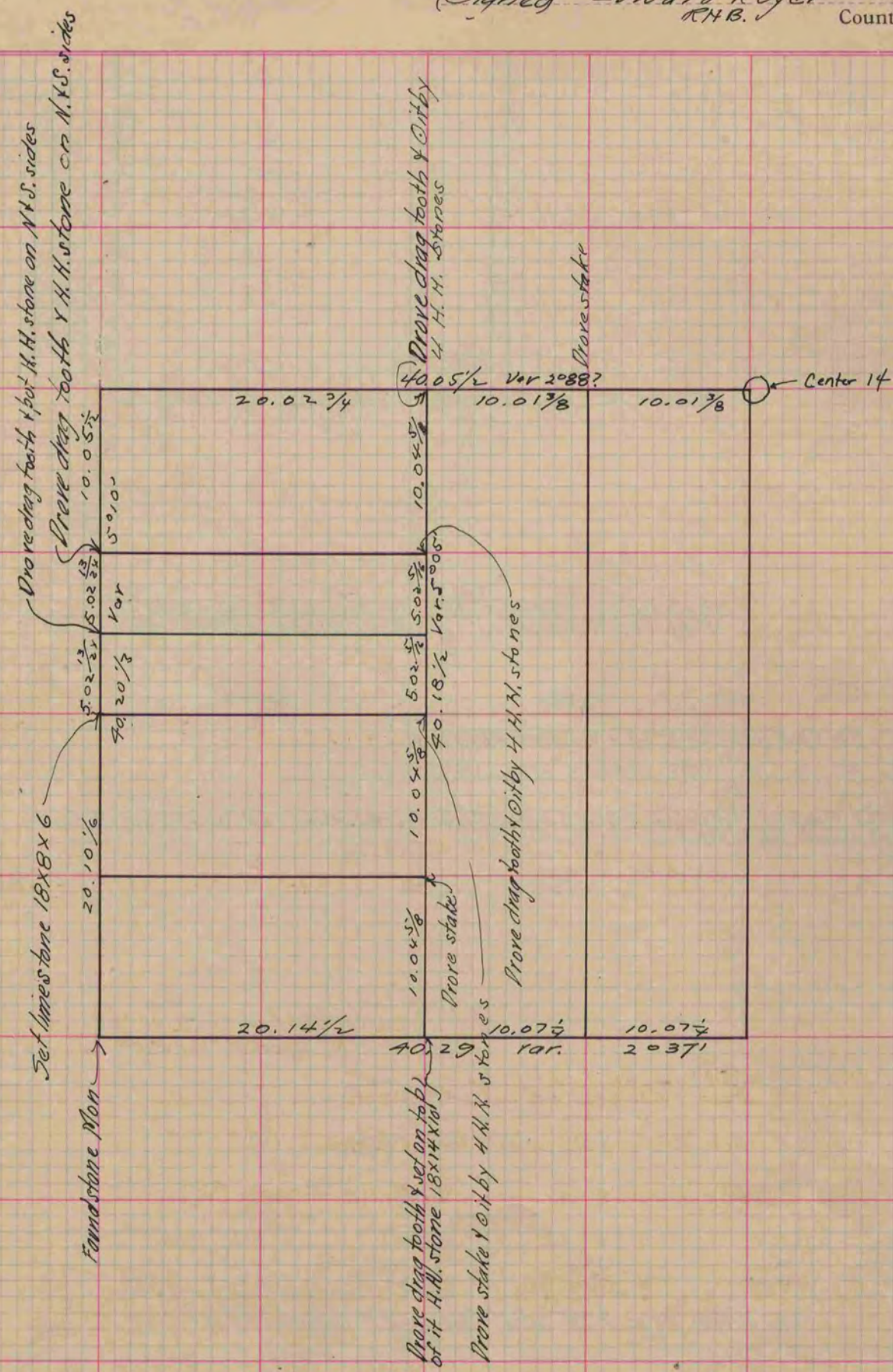
COUNTY BUILDING
CITY OF JANESVILLE

Of a Survey on Section $SW\frac{1}{4}$ 14 T 3 R 13 E. of the 4 P. M. in Harmony Township

Rock County, Wisconsin, made November the 15 1886

I hereby certify that the following is a correct record of said survey as made by me.

(Signed) Edward Ruser
R.H.B. County Surveyor.



Copied from page 237 Vol. 2. Original County Surveyors Record.