

PLAT AND RECORD

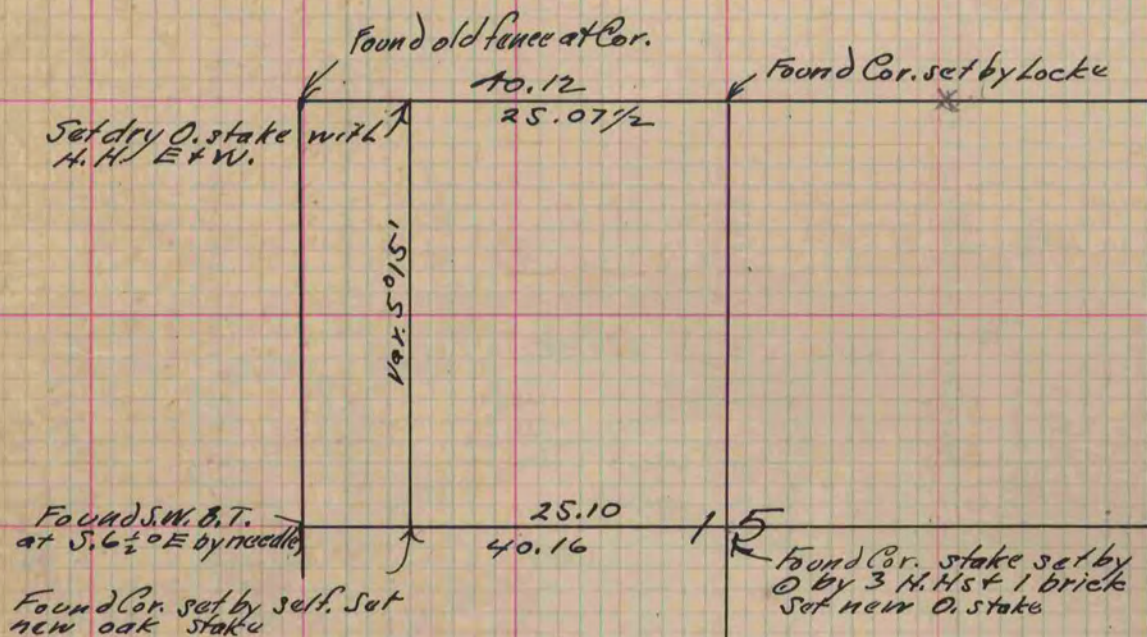
MICROFILMED

Of a Survey on Section 15 T 1 R 13 E. of the 4 P. M. in Turtle Township
Rock County, Wisconsin, made June the 7th 1880

I hereby certify that the following is a correct record of said survey as made by me.

COUNTY BUILDING
CITY OF JANESVILLE

(Signed) R. N. Lee Dept.
R. H. B. County Surveyor.



Copied from Page 254 Vol. 2. County Surveyors Record.