

MICROFILMED

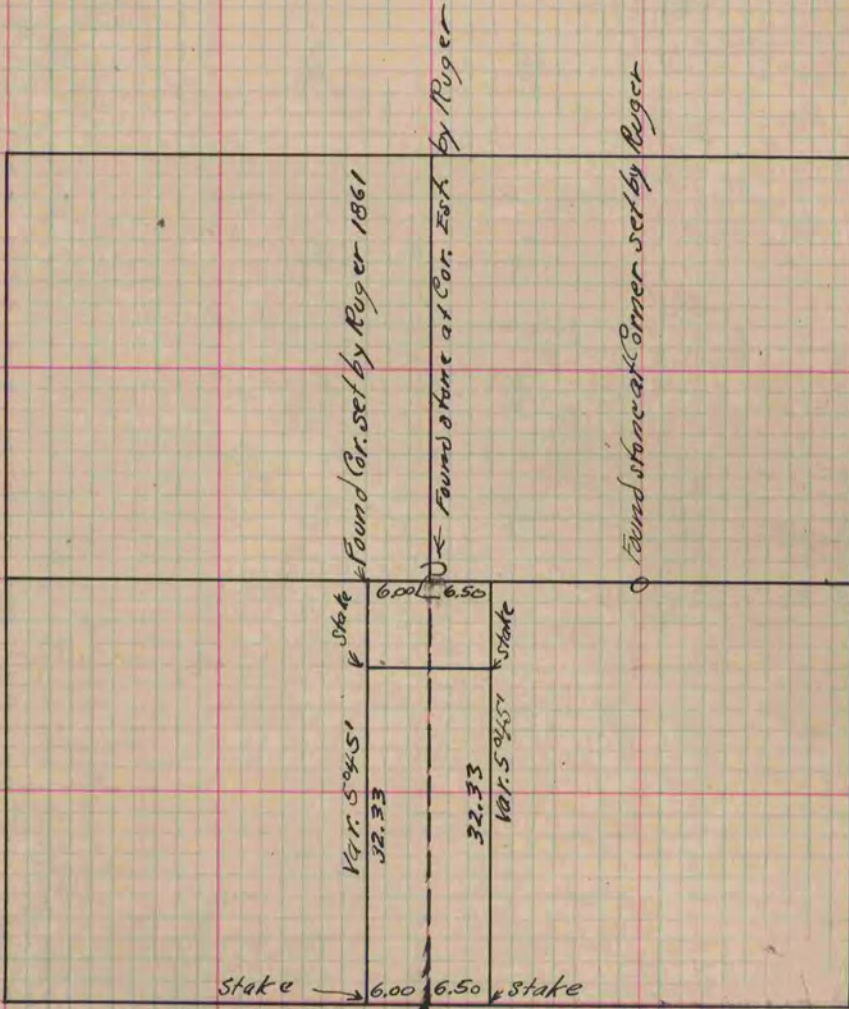
PLAT AND RECORD

Of a Survey on Section 2 T 1 R 13 E. of the 4 P. M. in Turtle Township
Rock County, Wisconsin, made June the 8th 1880

I hereby certify that the following is a correct record of said survey as made by me.

COUNTY BUILDING
CITY OF JANESVILLE

(Signed) R. K. Lee Dept.
County Surveyor.



Found stump of S.W.B.T. set dry oak stake by 3 limestone

Copied from P. 256 Vol. 2. County Surveyors Record