

# MICROFILMED PLAT AND RECORD

309  
V-2

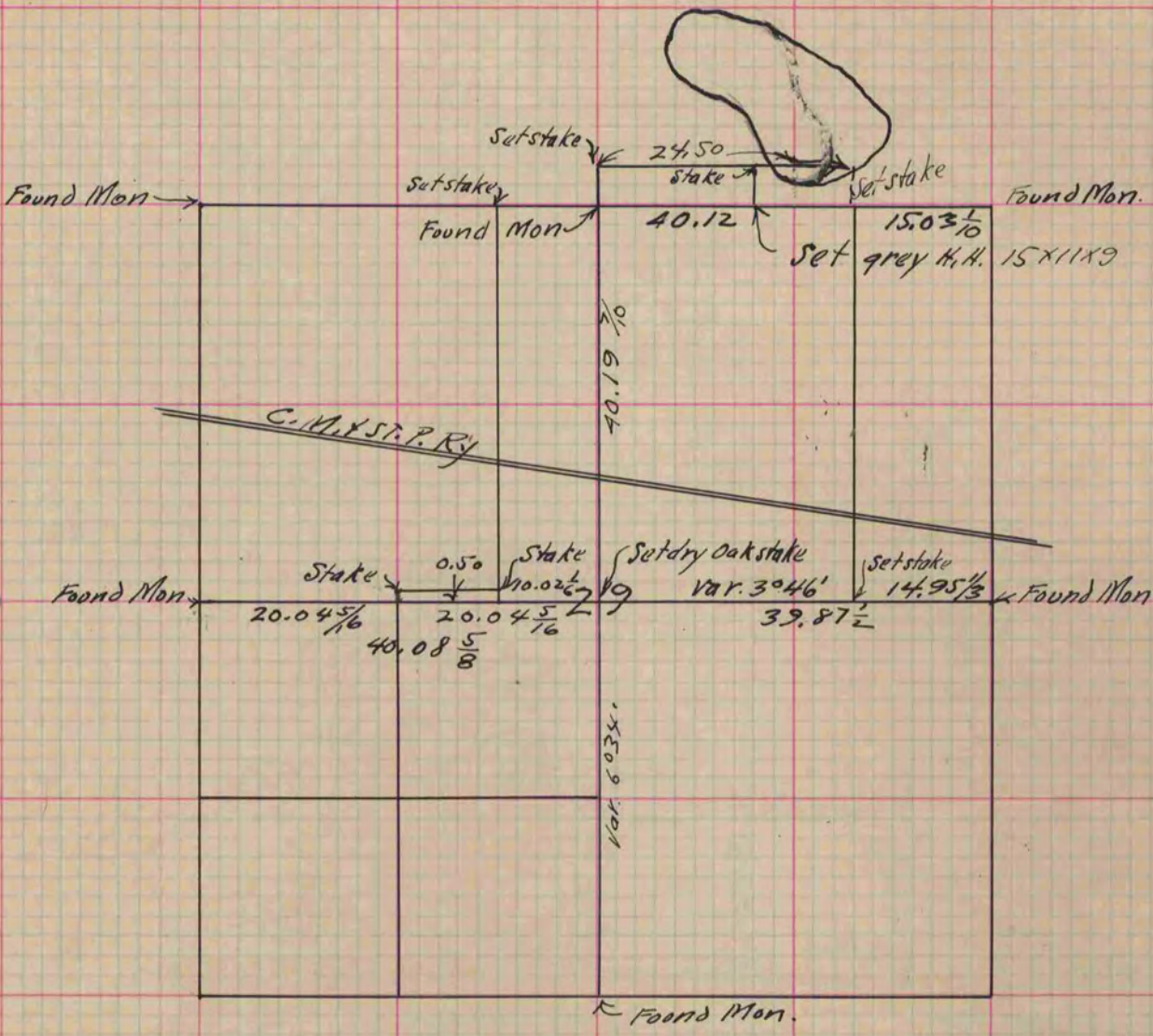
COUNTY BUILDING  
CITY OF JANESVILLE

Of a Survey on Sections 29 & 20 T 4 R 13 E. of the 4 P. M. in Milton Township

Rock County, Wisconsin, made August the 20 & 21<sup>st</sup> 1880

I hereby certify that the following is a correct record of said survey as made by me.

(Signed) R. K. Lee Dept. R. H. B. County Surveyor.



Copied from P. 258 Vol. 2. County Surveyors Record