

PLAT AND RECORD

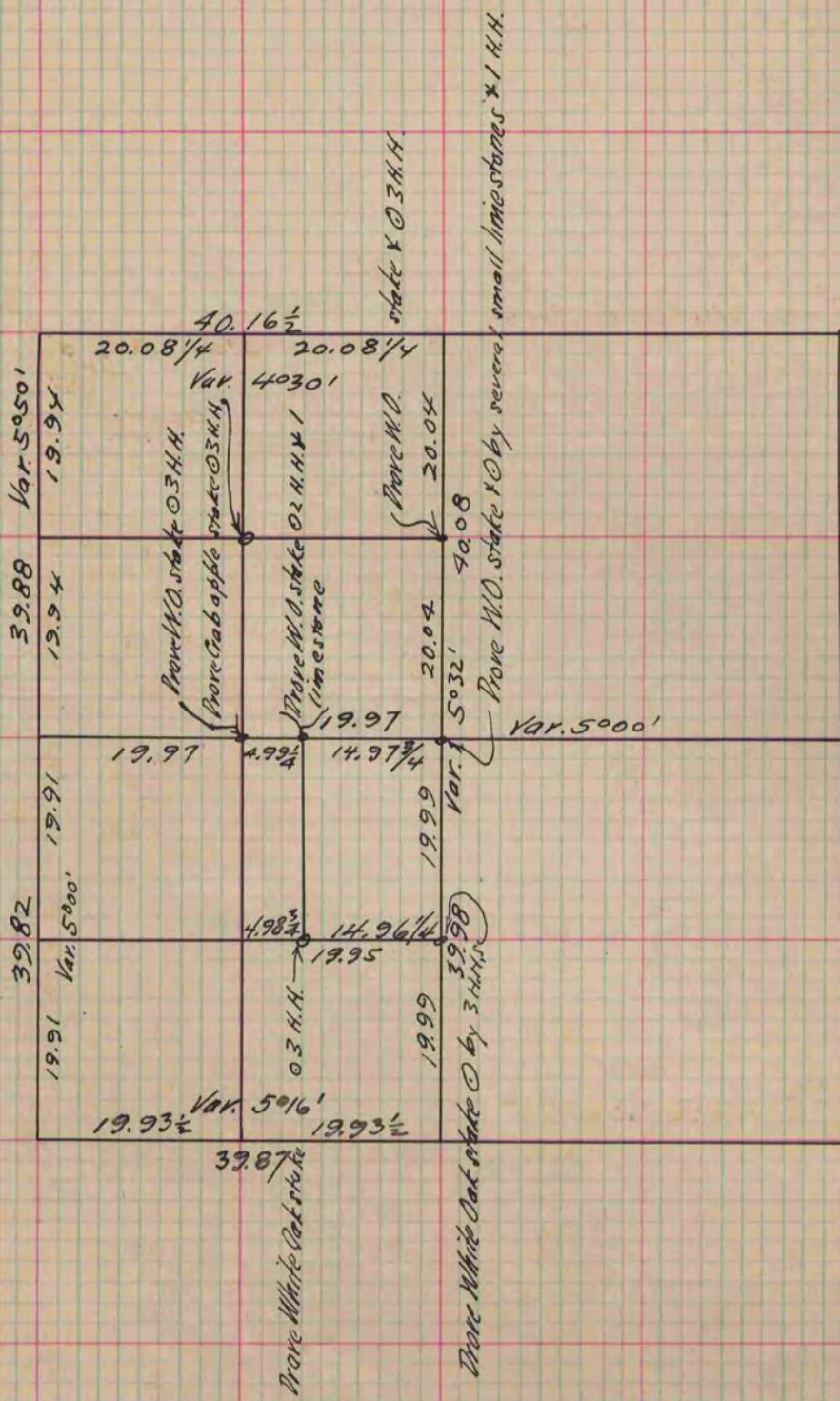
Of a Survey on Section 12 T 1 R 11 E. of the 4 P. M. in Newark Township

Rock County, Wisconsin, made September the 8th & 9th 1881

I hereby certify that the following is a correct record of said survey as made by me.

COUNTY BUILDING
CITY OF JANESVILLE

(Signed) R. K. Lee
R. H. B. County Surveyor.



Copied from P. 270 Vol. 2. County Surveyors Record.