

# PLAT AND RECORD

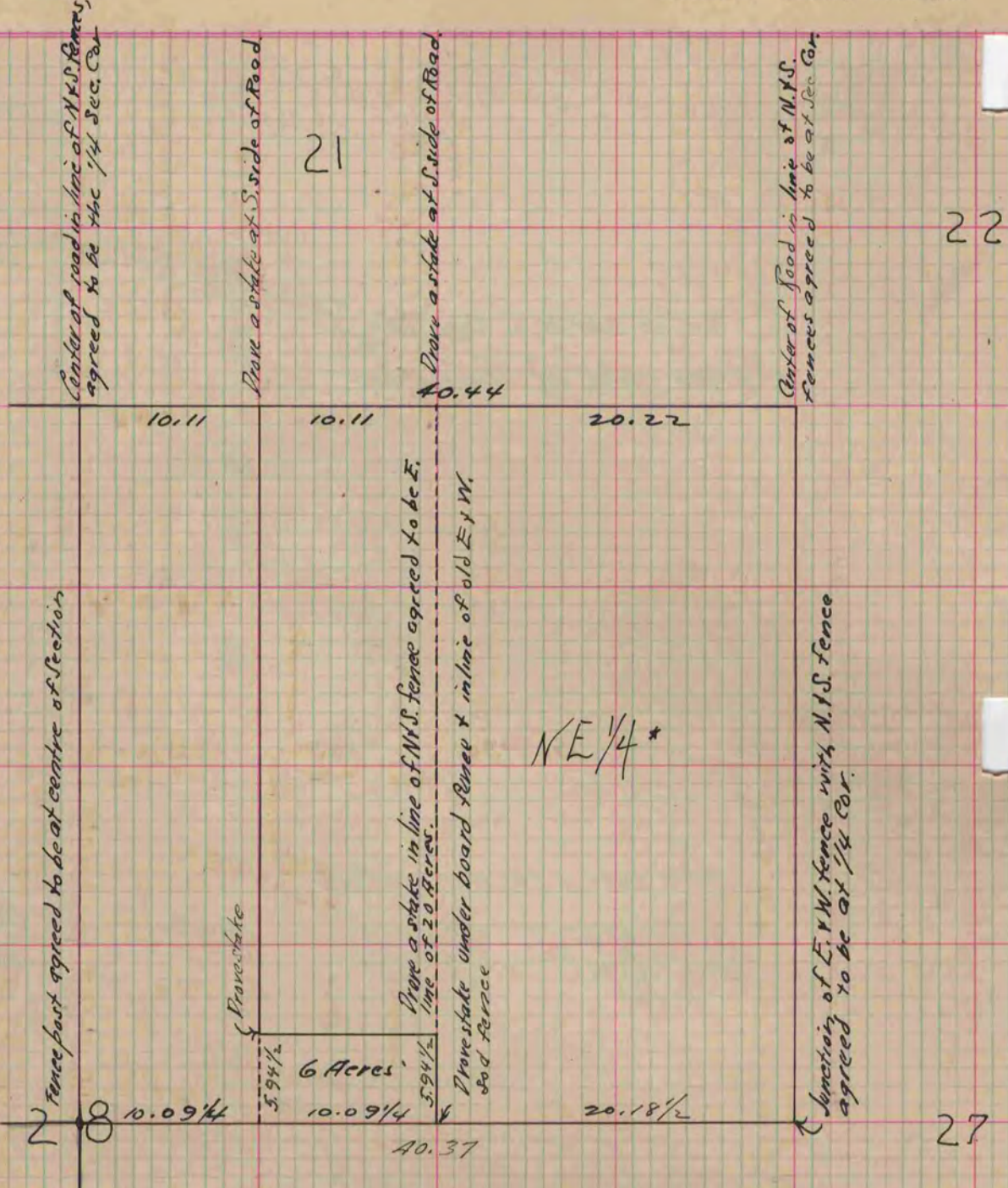
**MICROFILMED**

Of a Survey on Section 28 T 1 R 14 E. of the 4 P. M. in Clinton Township  
Rock County, Wisconsin, made September the 20<sup>th</sup> 1881

I hereby certify that the following is a correct record of said survey as made by me.

COUNTY BUILDING  
CITY OF JANESVILLE

(Signed) R. K. Lee  
R.H.B. County Surveyor.



\* Copied from Beloit Records  
12/4/25

Copied from P. 272 Vol. 2: County Surveyors Record