

# PLAT AND RECORD

**MICROFILMED**

Of a Survey on Section 11 T 1 R 11 E. of the 4 P. M. in Newark Township

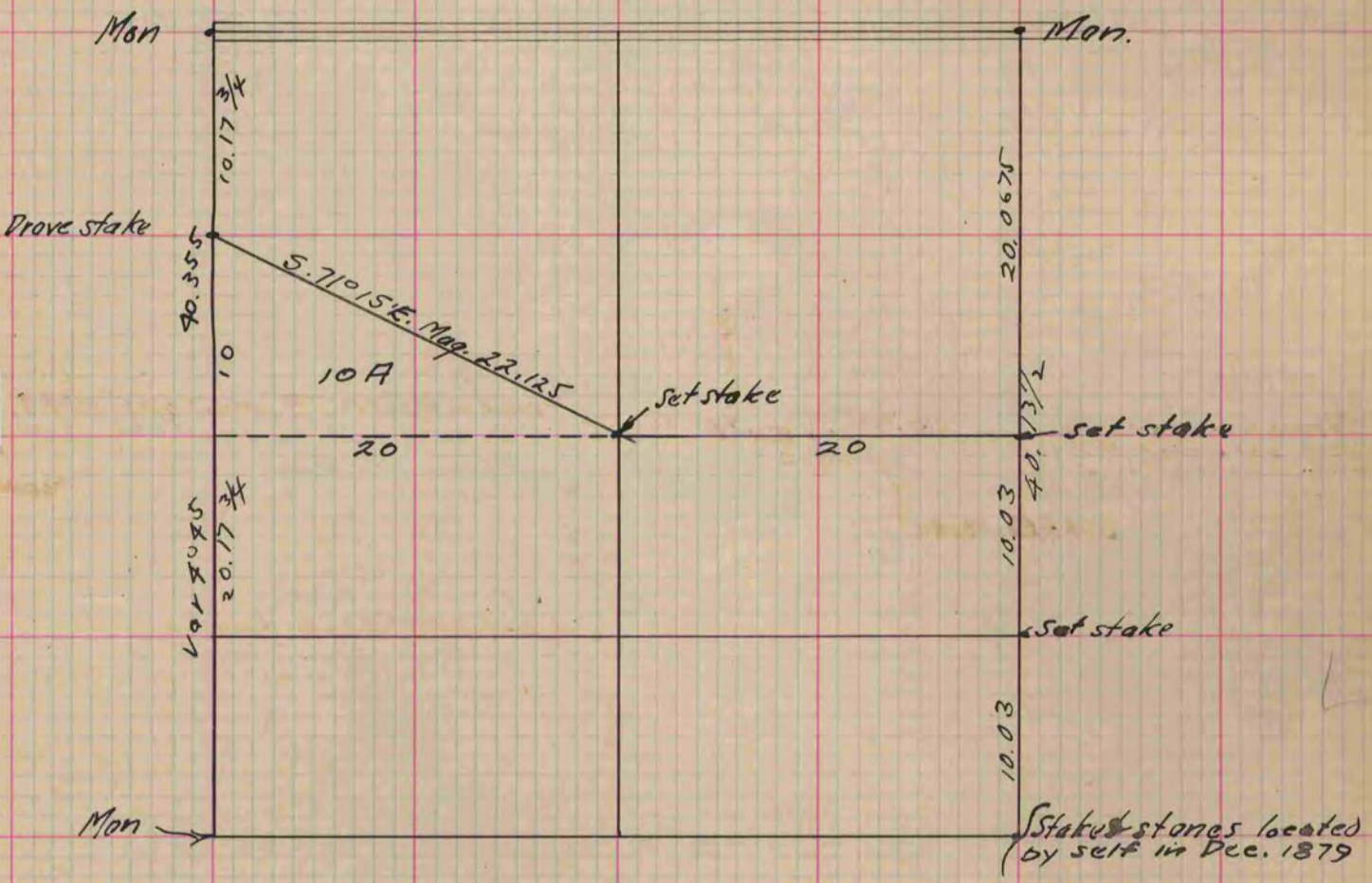
Rock County, Wisconsin, made January the 5th 1882

I hereby certify that the following is a correct record of said survey as made by me.

COUNTY BUILDING  
CITY OF JANESVILLE

(Signed) J. H. Holmes  
R.H.B. County Surveyor.

*N.W. 1/4 Sec. 11. Newark*



*Copied from P. 282 Vol. 2 County Surveyors Record.*