

MICROFILMED

# PLAT AND RECORD

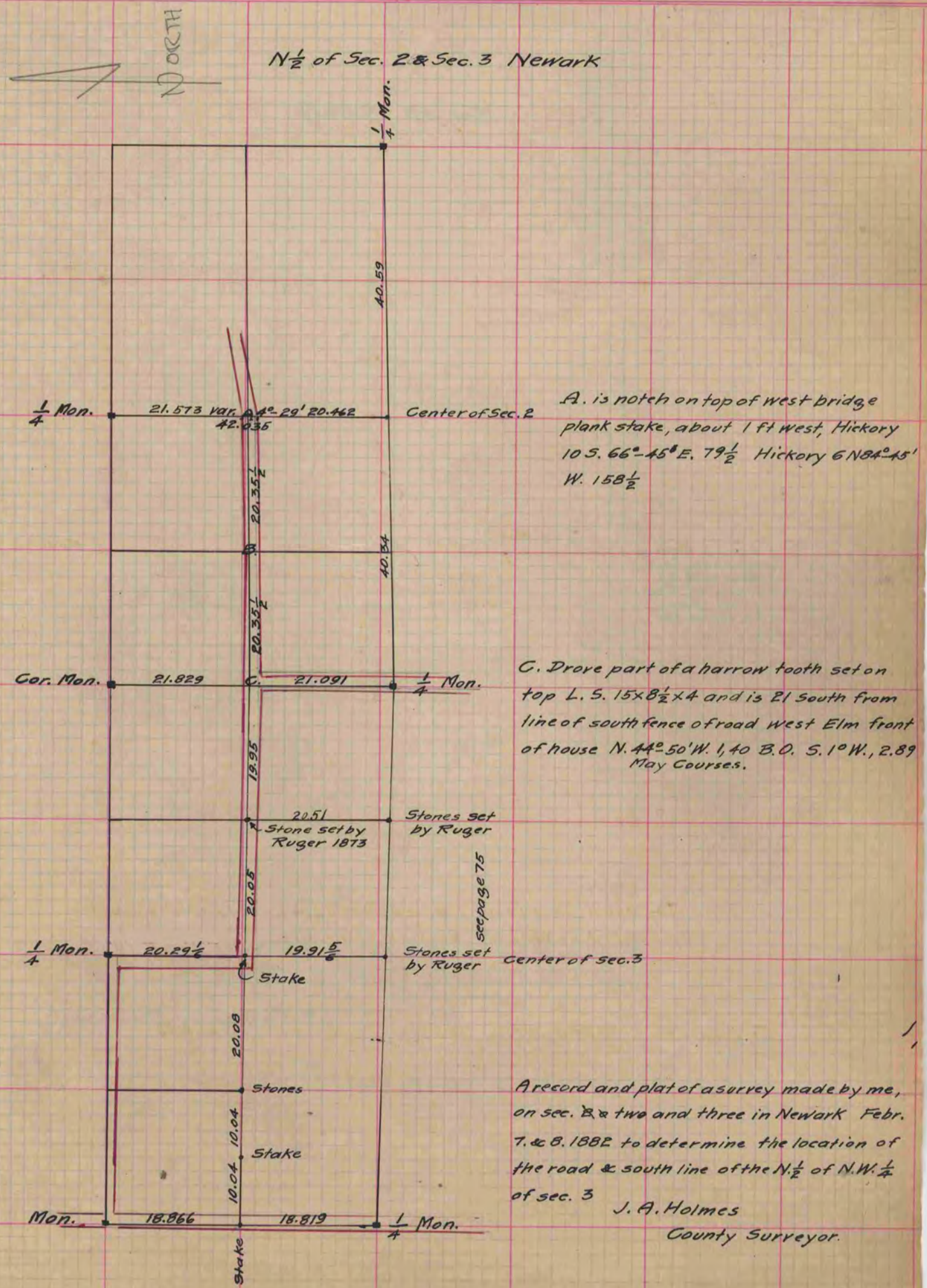
COUNTY BUILDING  
CITY OF JANESVILLE

Of a Survey on Section 2 & 3 T 1 R 11 E. of the 4 P. M. in Newark Township

Rock County, Wisconsin, made February the 7th. & 8th. 1882

I hereby certify that the following is a correct record of said survey as made by me.

(Signed) J. A. Holmes  
R. H. B. County Surveyor.



A. is notch on top of west bridge plank stake, about 1 ft west, Hickory 10 S. 66°-45' E. 79 1/2' Hickory 6 N 84°-45' W. 158 1/2'

C. Drove part of a harrow tooth set on top L. S. 15x8 1/2 x 4 and is 21 South from line of south fence of road West Elm front of house N. 44°-50' W. 1, 40 B. O. S. 1° W., 2.89 May Courses.

A record and plat of a survey made by me, on sec. 2 & two and three in Newark Febr. 7. & 8. 1882 to determine the location of the road & south line of the N. 1/2 of N. W. 1/4 of sec. 3  
J. A. Holmes  
County Surveyor.