

PLAT AND RECORD

MICROFILMED

COUNTY BUILDING
CITY OF JANESVILLE

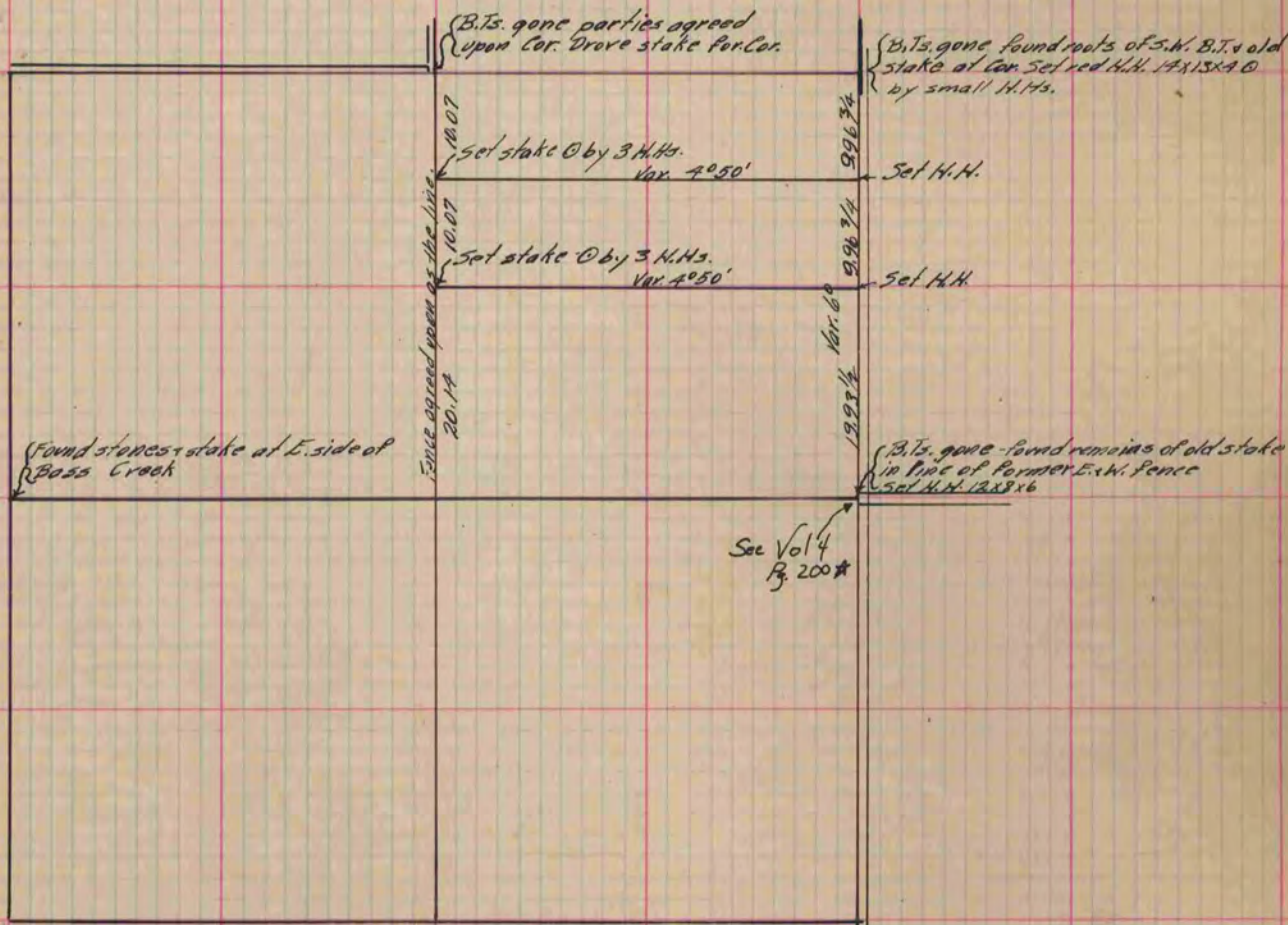
Of a Survey on Section 19 T 2 R 12 E. of the 4 P. M. in Rock Township

Rock County, Wisconsin, made Dec. the 5th & 9th 1863

I hereby certify that the following is a correct record of said survey as made by me.

(Signed) R. H. Lee
R. H. B.

Dep. County Surveyor.



* Copied from Beloit Records
12/11/75
G.Q.

Copied from P. 293 Vol. 2 County Surveyor's Record.