

PLAT AND RECORD

Of a Survey on Section 9 T 1 R 13 E. of the 4 P. M. in Turtle Township

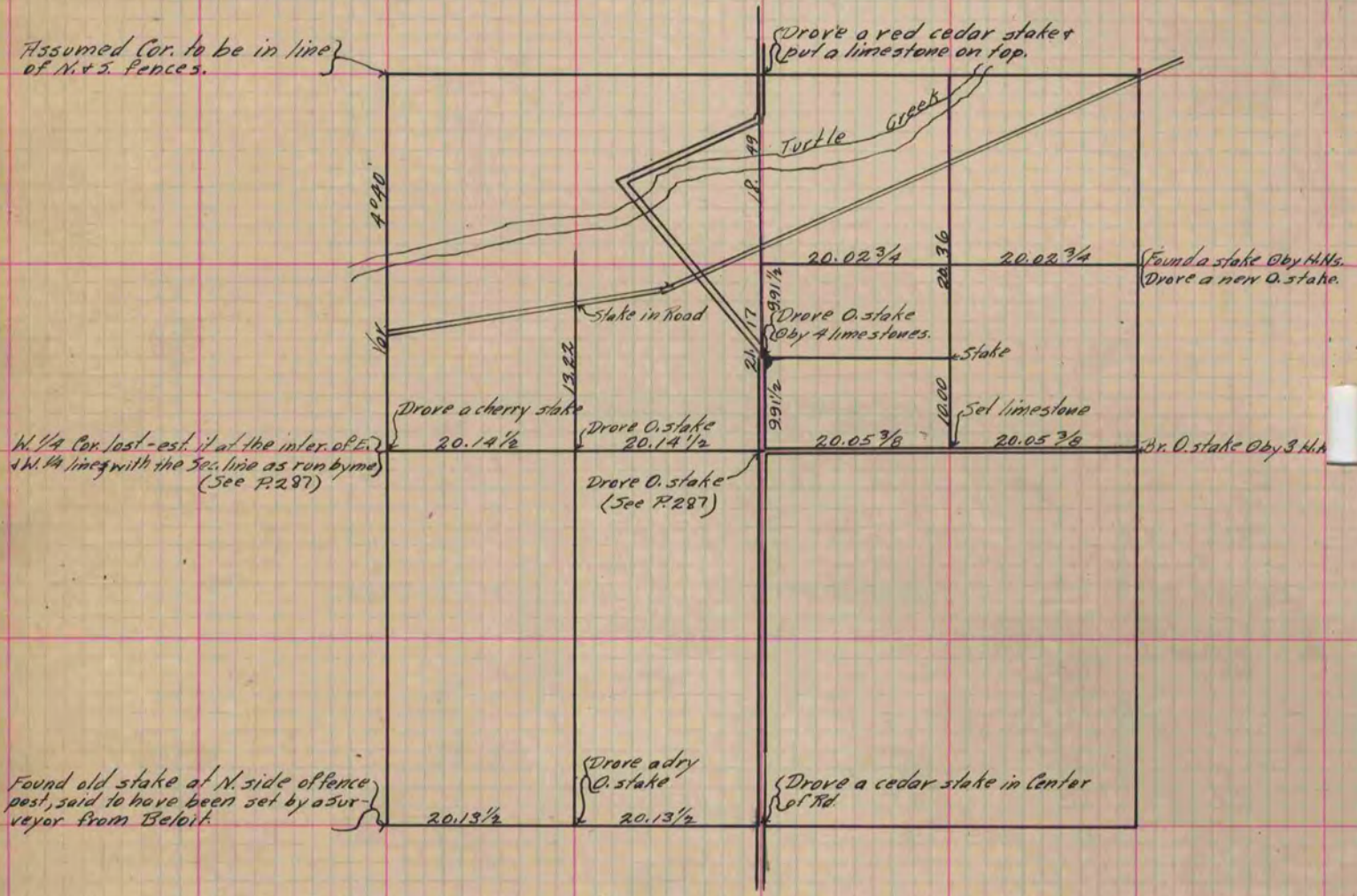
Rock County, Wisconsin, made March the 16th, 17th & 18th 1883

I hereby certify that the following is a correct record of said survey as made by me.

**COUNTY BUILDING
CITY OF JANESVILLE**

(Signed) R. K. Lee.
R. H. B.

Dep. County Surveyor.



Copied from P. 296 Vol. 2 County Surveyor's Record.