

# PLAT AND RECORD

**MICROFILMED**

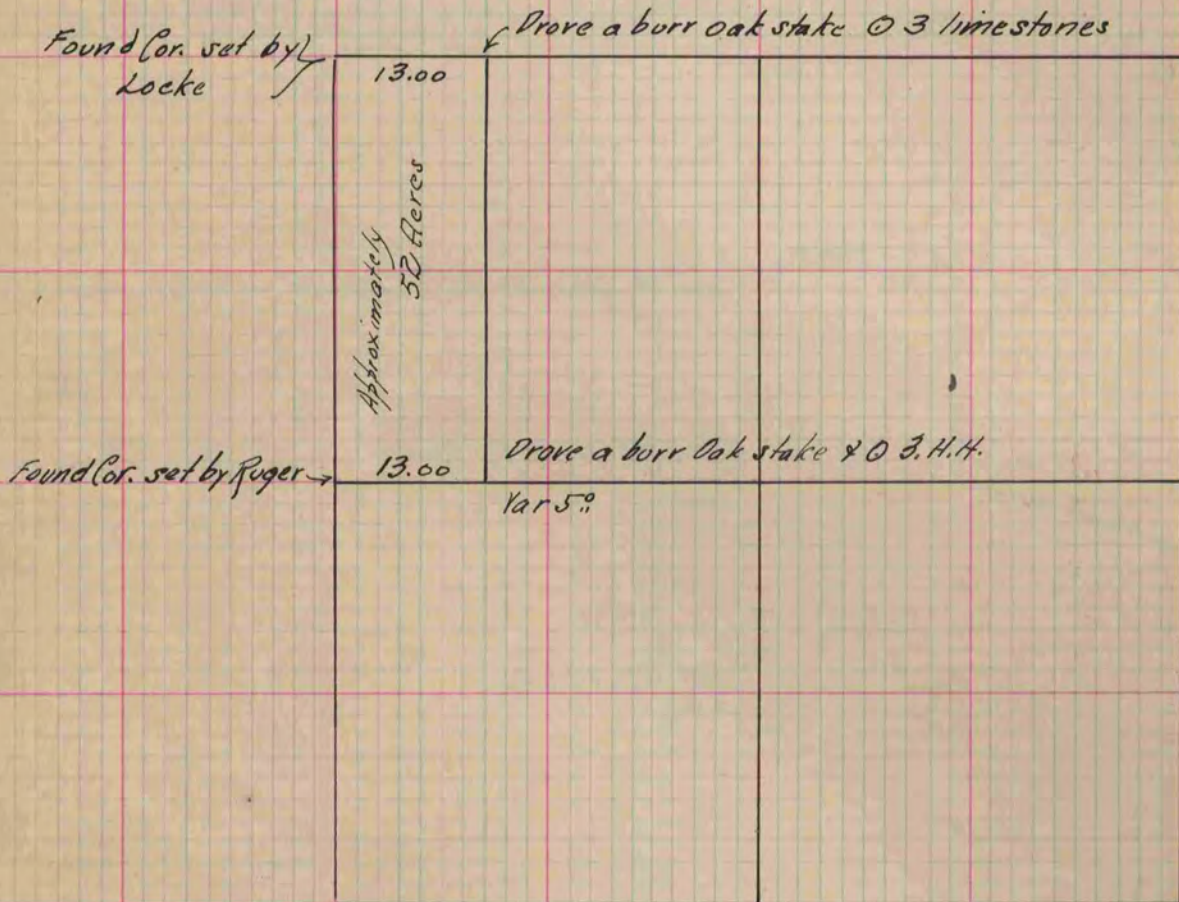
Of a Survey on Section 33 T 2 R 14 E. of the 4 P. M. in Bradford Township

Rock County, Wisconsin, made June the 20<sup>th</sup> + 21<sup>st</sup> 1882

I hereby certify that the following is a correct record of said survey as made by me.

COUNTY BUILDING  
CITY OF JANESVILLE

(Signed) R. K. Lee  
R. H. B. Dep. County Surveyor.



Copied from P. 301 Vol. 2. County Surveyors Record