

V-2
MICROFILMED

PLAT AND RECORD

Of a Survey on Section 7 T 2 R 13 E. of the 4 P. M. in La Prairie Township

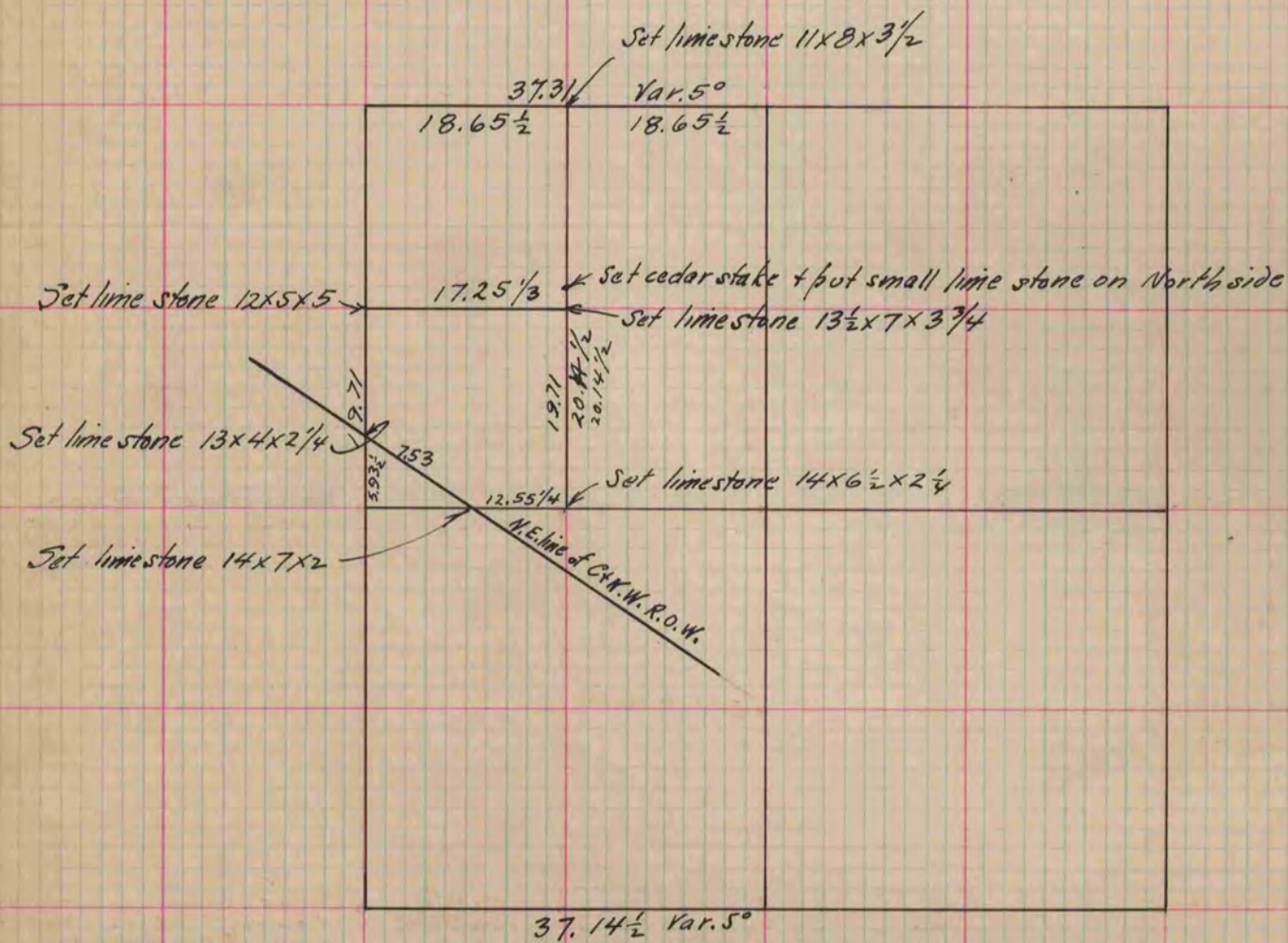
Rock County, Wisconsin, made September the 2 1884

I hereby certify that the following is a correct record of said survey as made by me.

COUNTY BUILDING
CITY OF JANESVILLE

(Signed) Edward Roger
R.H.B.

County Surveyor.



See page 18

Copied from Page 303, Vol. 2 County Surveyors Record.