

MICROFILMED

PLAT AND RECORD

379
V-2

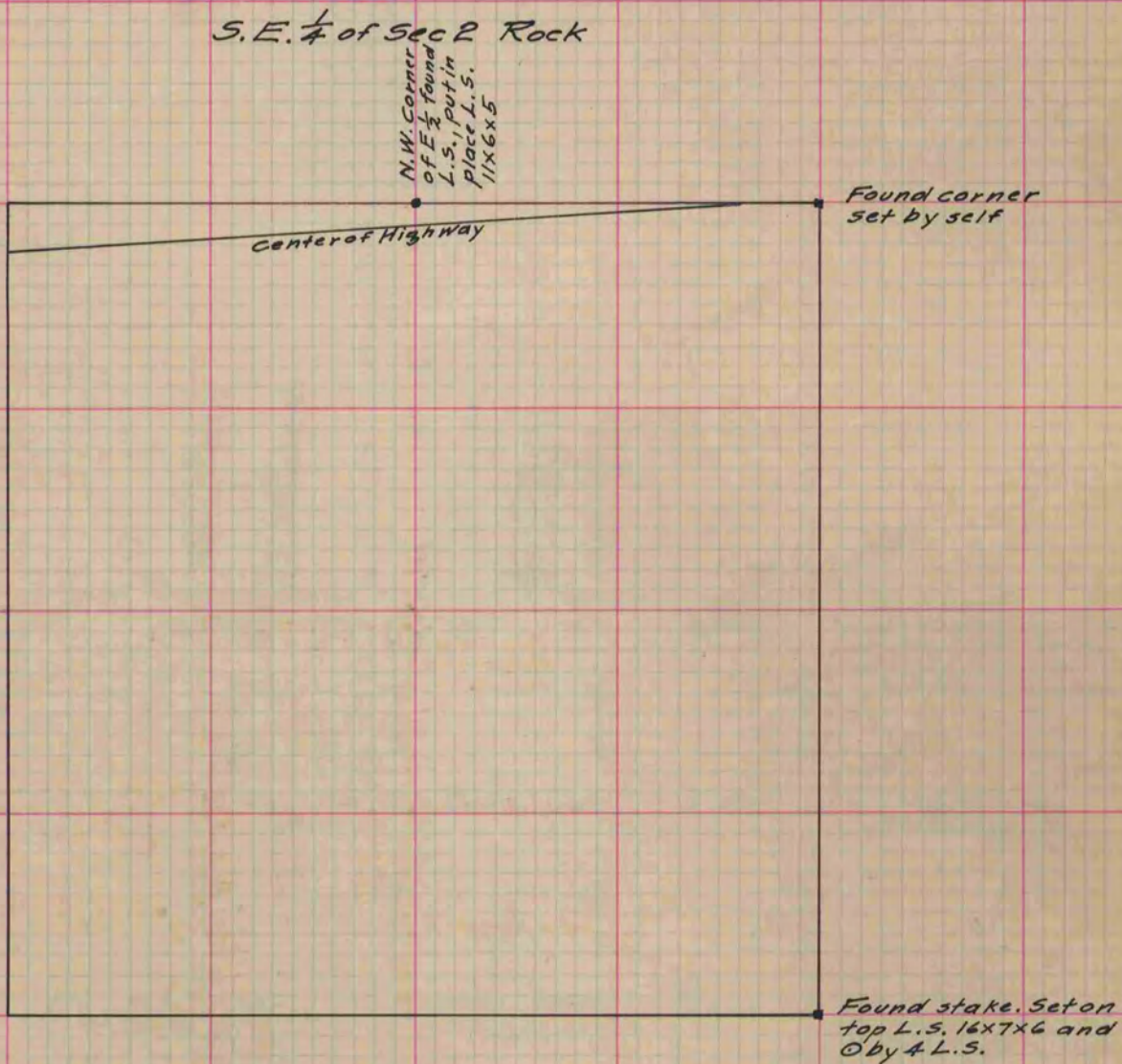
COUNTY BUILDING
CITY OF JANESVILLE

Of a Survey on Section 2 T 2 R 12 E. of the 4 P. M. in Rock Township

Rock County, Wisconsin, made July the 2nd 1883

I hereby certify that the following is a correct record of said survey as made by me.

(Signed) Edward Ruger
R. H. B. County Surveyor.



see page 14

From N.W. cor. of E $\frac{1}{2}$ it is $73\frac{3}{4}$ links south to center of highway

Copied from P. 305 Vol. 2 County Surveyors Record