

**MICROFILMED PLAT AND RECORD**

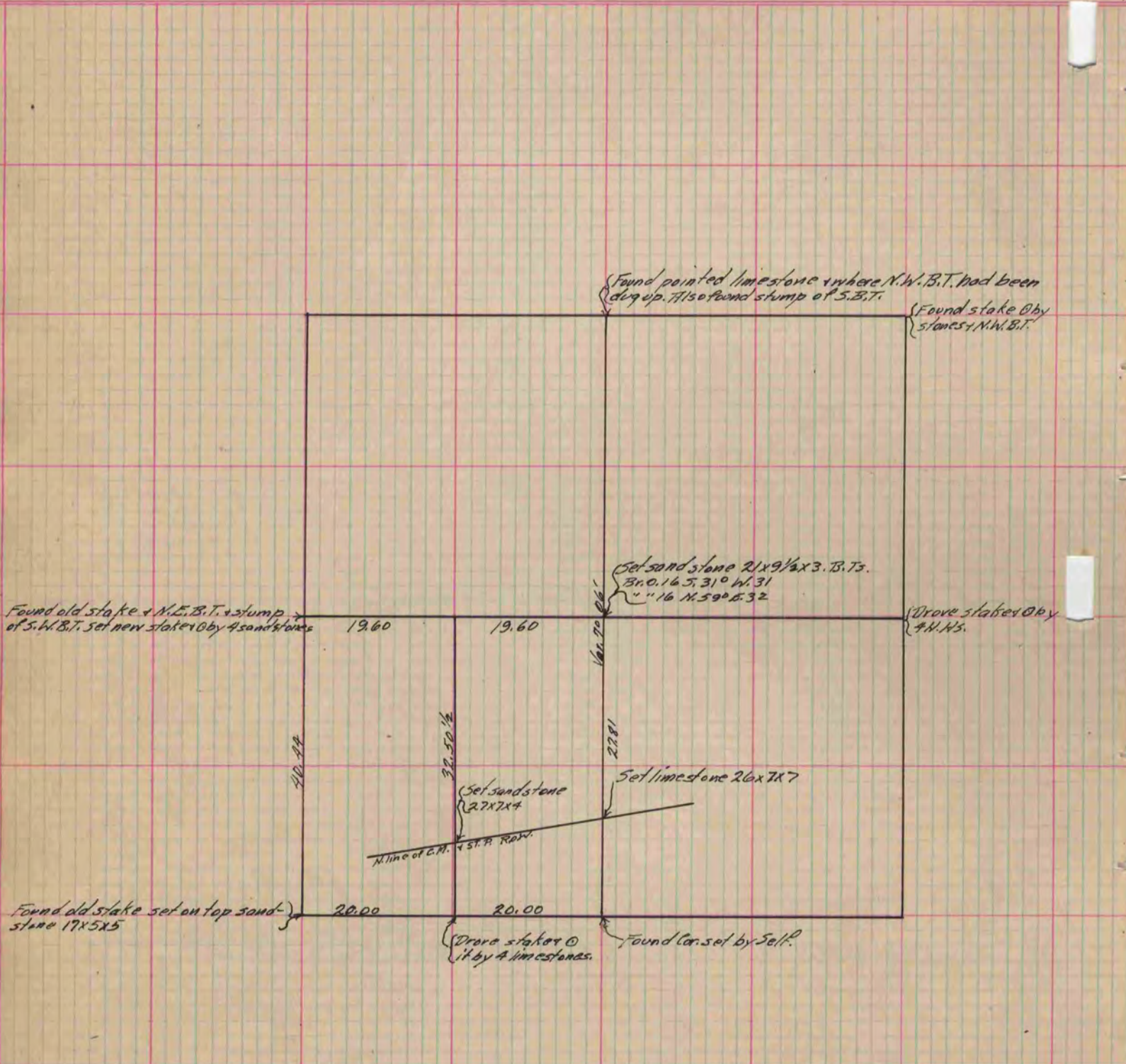
Of a Survey on Section 15 T 2 R 10 E. of the 4 P. M. in Spring Valley Township  
Rock County, Wisconsin, made December the 12 1882

I hereby certify that the following is a correct record of said survey as made by me.

COUNTY BUILDING  
CITY OF JANESVILLE

(Signed) Edward Ruger  
R.H.B.

County Surveyor.



Copied from P. 322 Vol. 2 County Surveyor's Record.