

MICROFILMED

PLAT AND RECORD

403
V-2

COUNTY BUILDING
CITY OF JANESVILLE

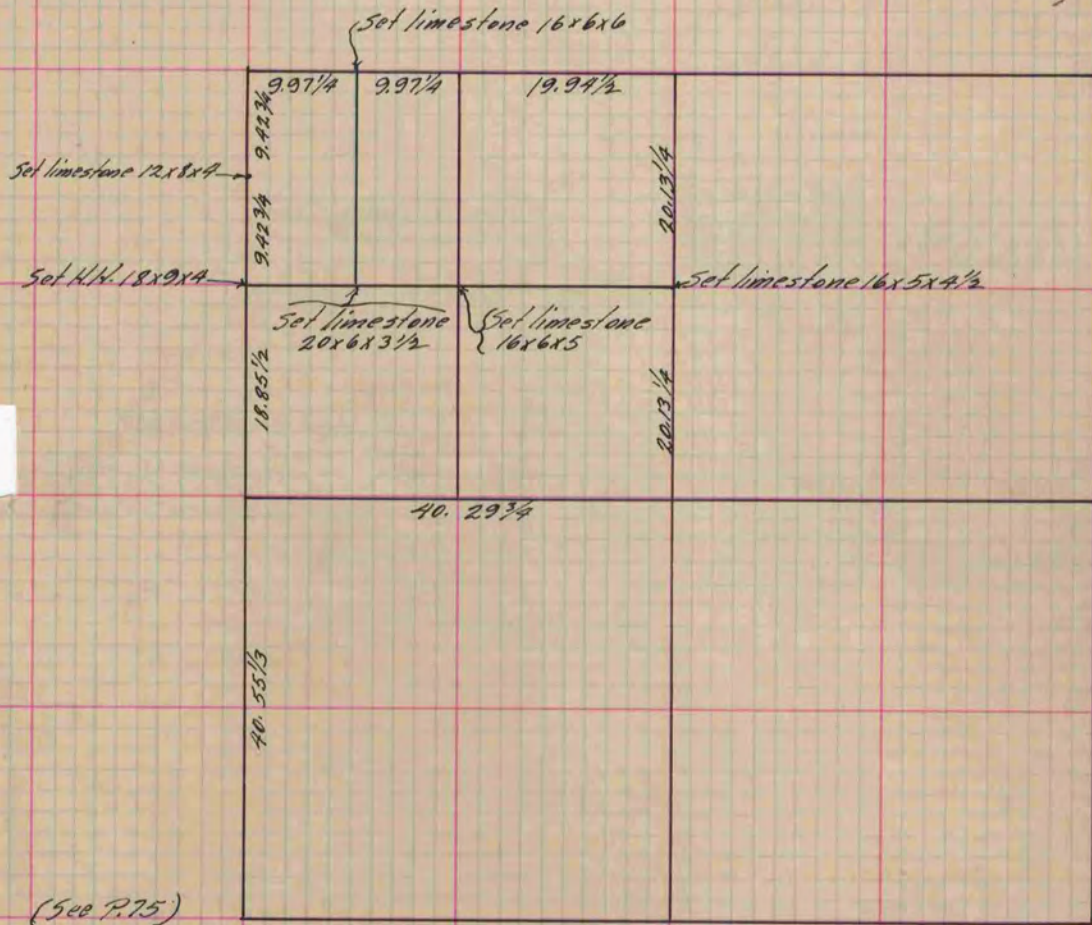
Of a Survey on Section 3 T / R // E. of the 4 P. M. in Newark Township

Rock County, Wisconsin, made May the 8 1882

I hereby certify that the following is a correct record of said survey as made by me.

(Signed) Edward Roger
R. H. B.

County Surveyor.



Copied from P. 325 Vol 2 County Surveyor's Record.