

MICROFILMED PLAT AND RECORD

Of a Survey on Sections 10 & 11 T 2 R 12 E. of the 4 P. M. in Rock Township

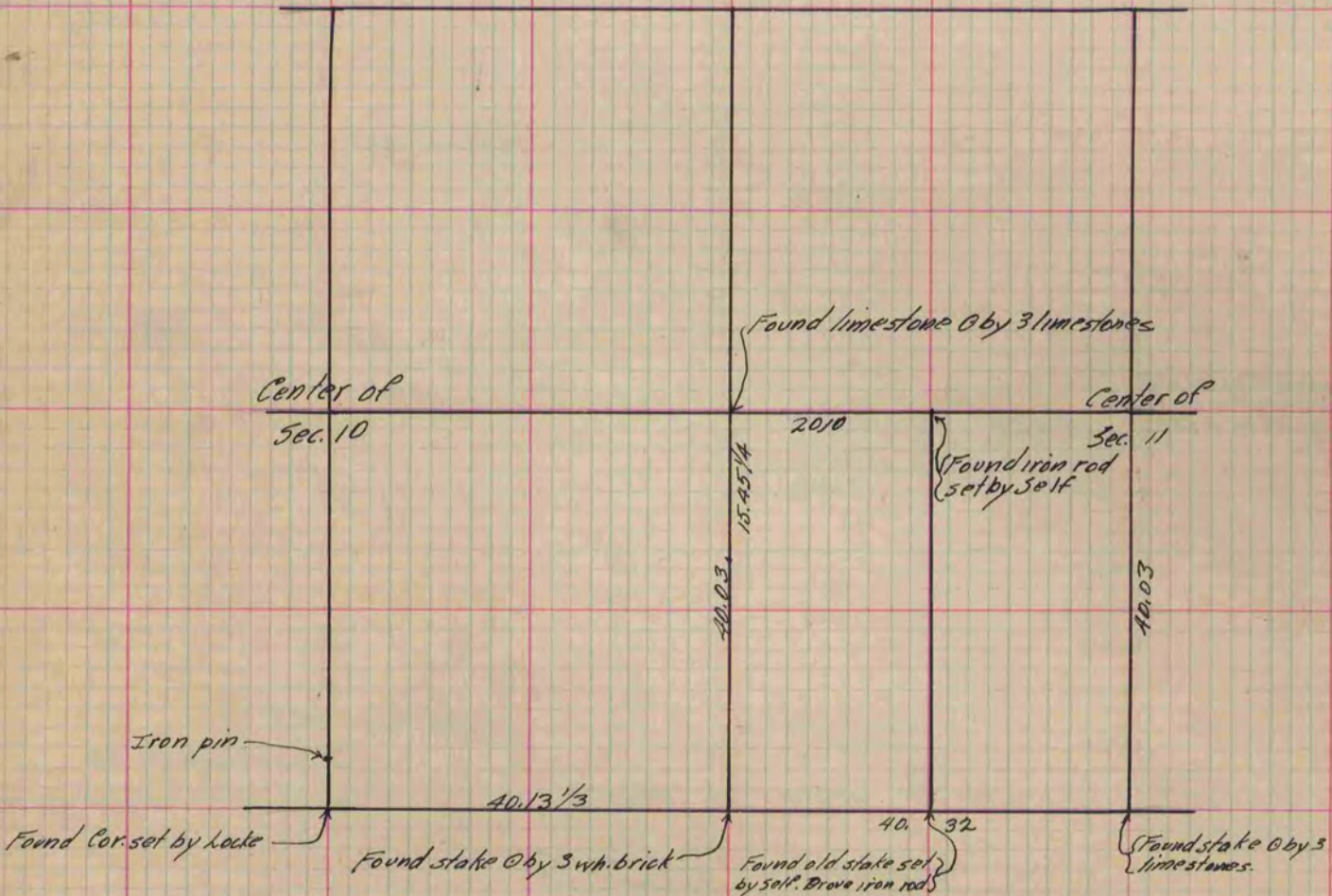
Rock County, Wisconsin, made January the 12th & 15 1883

I hereby certify that the following is a correct record of said survey as made by me.

COUNTY BUILDING
CITY OF JANESVILLE

(Signed) Edward Ruger
R. H. B.

County Surveyor.



Copied from P. 330 Vol. 2 County Surveyor's Record.