

PLAT AND RECORD

411
V-2

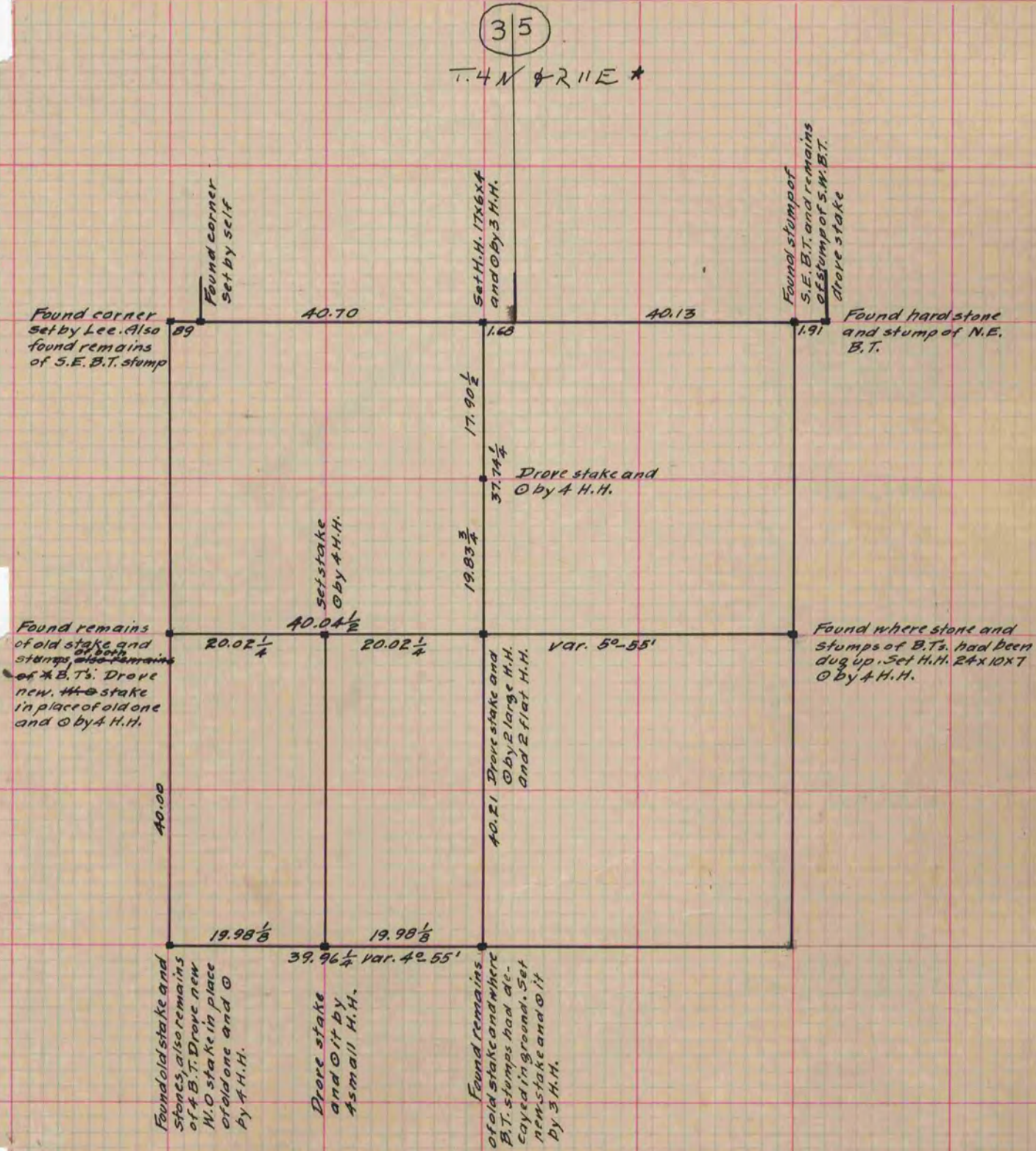
MICROFILMED

COUNTY BUILDING
CITY OF JANESVILLE

Of a Survey on Section 2 T 3 R 11 E. of the 4 P. M. in Center Township
35 4 11 Porter
Rock County, Wisconsin, made May the 23d. 1883

I hereby certify that the following is a correct record of said survey as made by me.

(Signed) Edward Ruger
R. H. B. County Surveyor.



Copied from P. 333 Vol. 2 County Surveyors Record

* Copied from Beloit Records
12/11/75
G.O.