

**MICROFILMED**

# PLAT AND RECORD

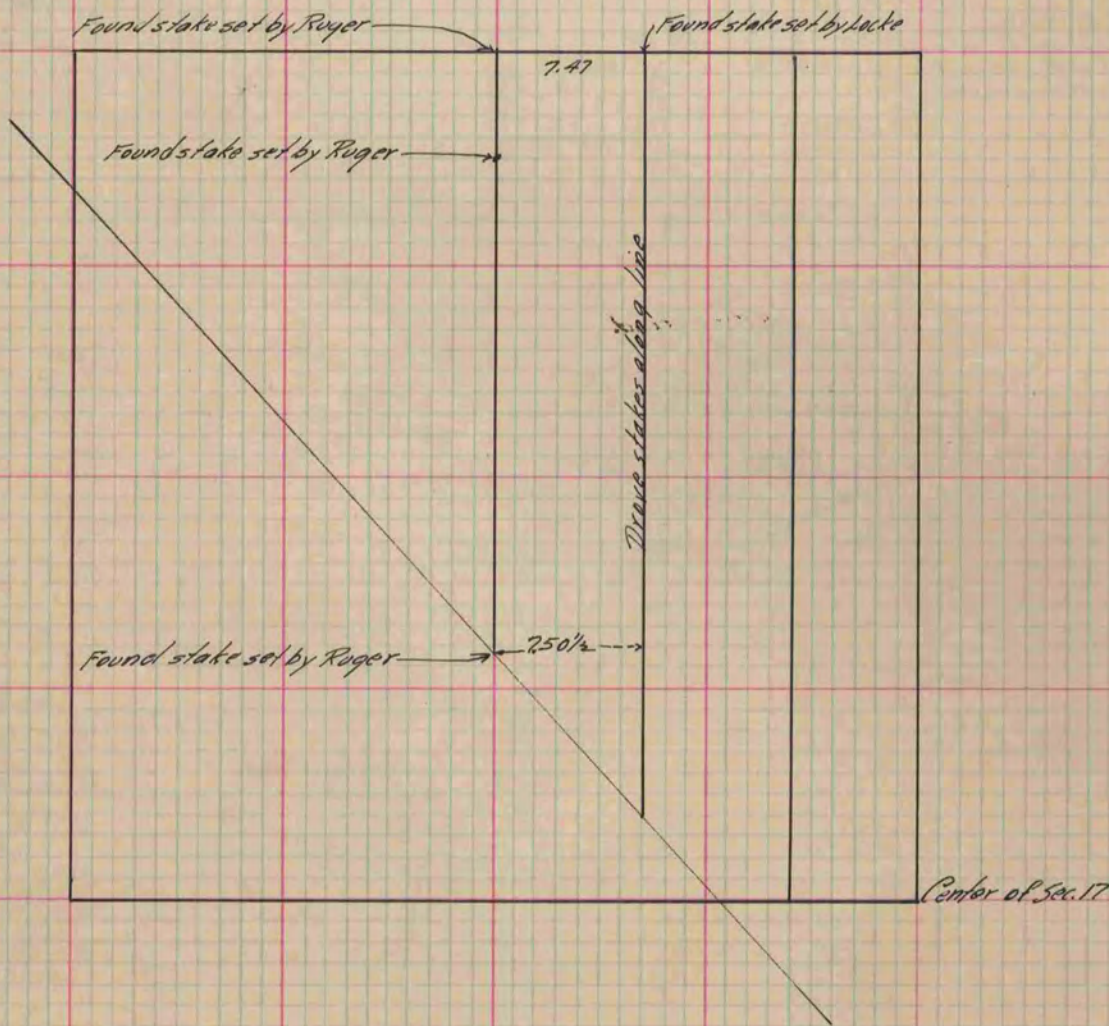
Of a Survey on <sup>N.W. 1/4</sup> Section 17 T 3 R 14 E. of the 4 P. M. in Johnstown Township

Rock County, Wisconsin, made December the 7 1889

I hereby certify that the following is a correct record of said survey as made by me.

COUNTY BUILDING  
CITY OF JANESVILLE

(Signed) O. G. Bleedorn Dept.  
R. H. B. County Surveyor.



*Copied from P. 342 Vol. 12 County Surveyor's Record.*