

MICROFILMED PLAT AND RECORD

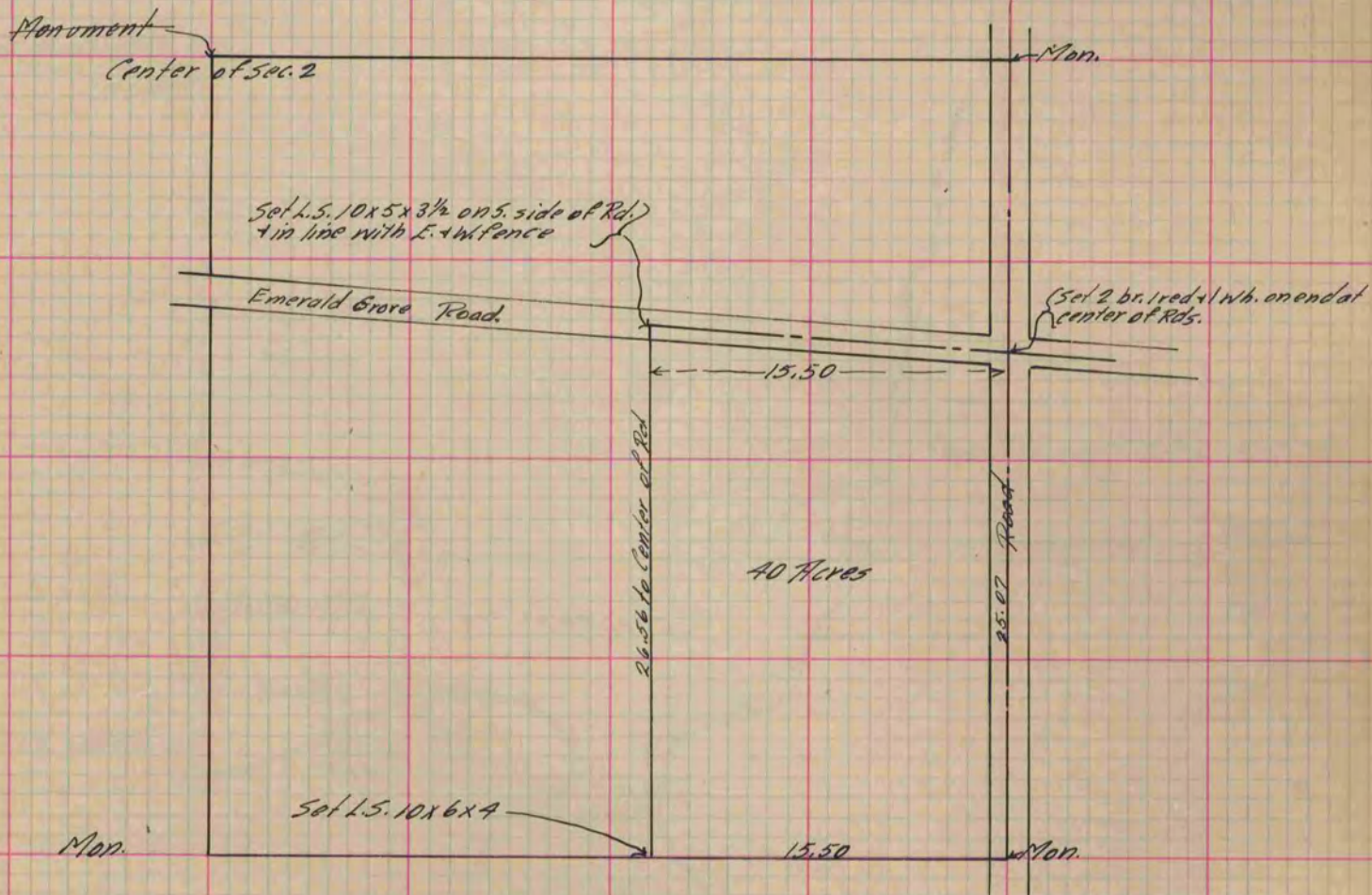
435
V-2

COUNTY BUILDING
CITY OF JANESVILLE

Of a Survey on ^{S.E. 1/4} Section 2 T 2 R 13 E. of the 4 P. M. in La Prairie Township
Rock County, Wisconsin, made December the 15th 1889

I hereby certify that the following is a correct record of said survey as made by me.

(Signed) O.G. Bleedorn Dept.
R.H.B. County Surveyor.



Copied from P. 343 Vol. 2 County Surveyor's Record.