

V-2 MICROFILMED

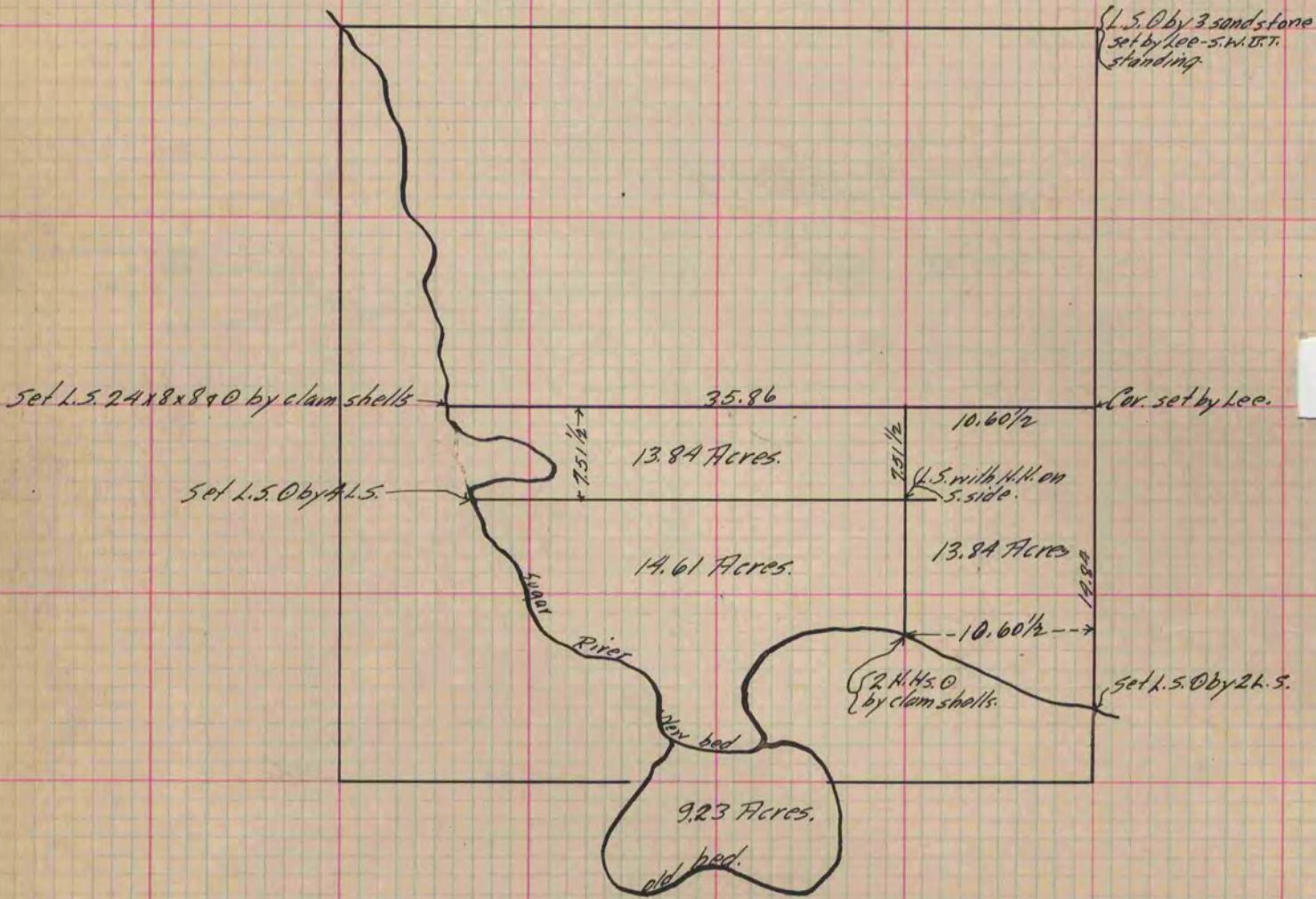
PLAT AND RECORD

Of a Survey on ^{NW 1/4} Section 20 T 1 R 10 E. of the 4 P. M. in Avon Township
Rock County, Wisconsin, made December the 19th & 21st 1889

I hereby certify that the following is a correct record of said survey as made by me.

COUNTY BUILDING
CITY OF JANESVILLE

(Signed) O. G. Bloodorn ^{Dept.}
R. H. B. County Surveyor.



Copied from P. 343 Vol. 2 County Surveyor's Record.