

MICROFILMED PLAT AND RECORD

448
V-2

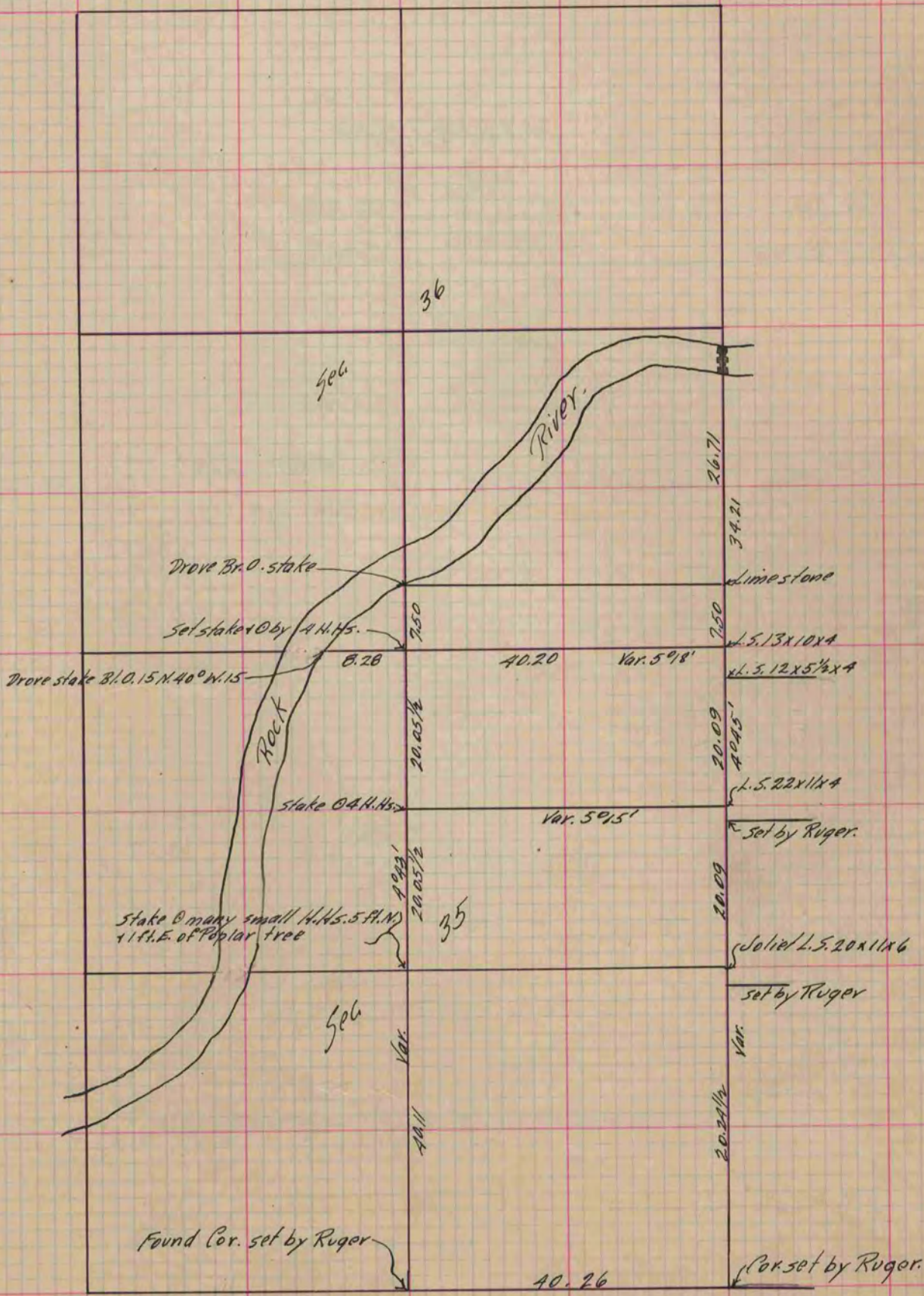
COUNTY BUILDING
CITY OF JANESVILLE

Of a Survey on Section 35+36 2 R 12 E. of the 4 P. M. in Rock Township

Rock County, Wisconsin, made April the 8 1891

I hereby certify that the following is a correct record of said survey as made by me.

(Signed) O.G. Bleedorn Dep.
R.H.B. County Surveyor.



Copied from P. 354 Vol. 2 County Surveyor's Record.