

MICROFILMED

PLAT AND RECORD

451

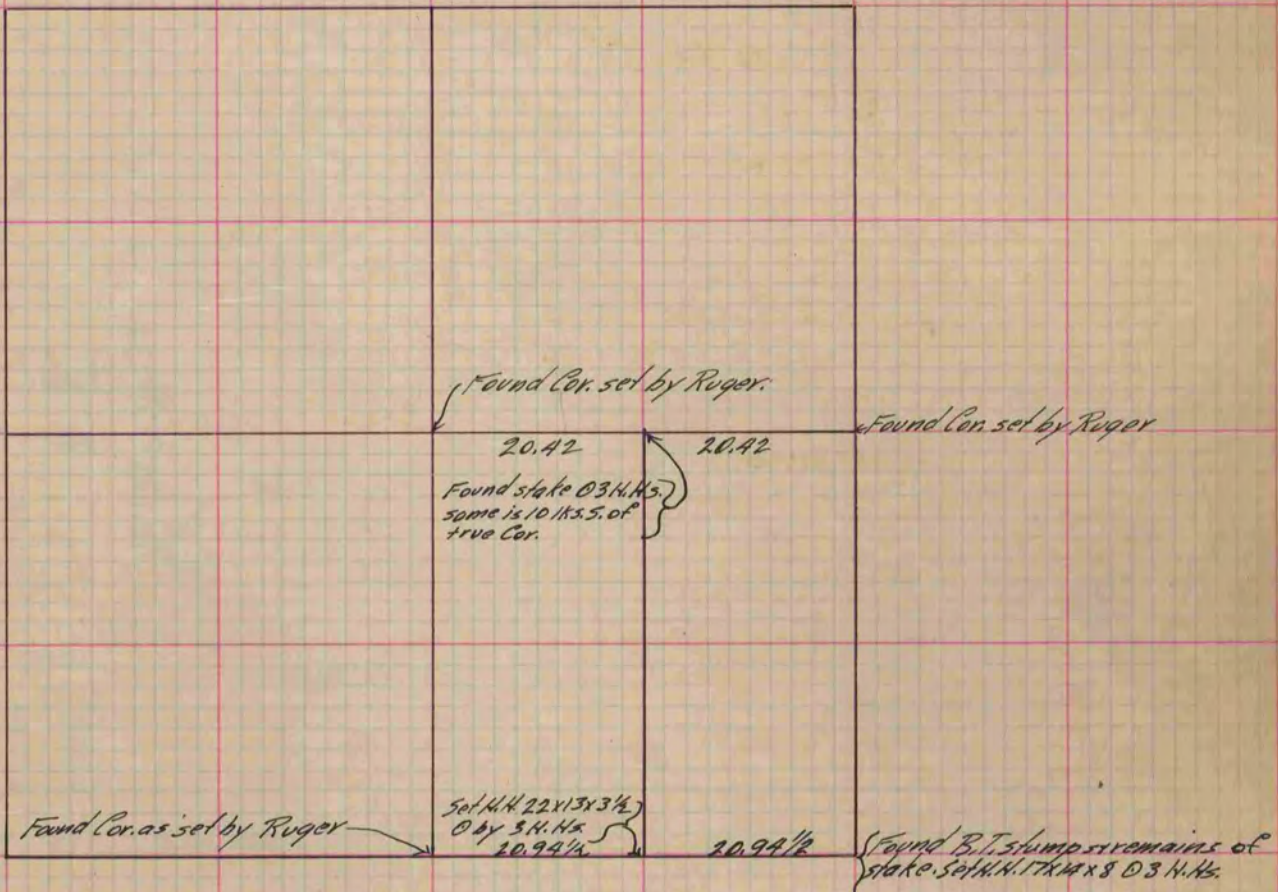
V-2

COUNTY BUILDING
CITY OF JANESVILLE

Of a Survey on Section 11 T 2 R 10 E. of the 4 P. M. in Spring Valley Township
Rock County, Wisconsin, made May the 5 1891

I hereby certify that the following is a correct record of said survey as made by me.

(Signed) O. G. Bleedorn Dep.
R. H. B. County Surveyor.



Copied from P. 358 Vol. 2 County Surveyor's Record.