

MICROFILMED PLAT AND RECORD

COUNTY BUILDING
CITY OF JANESVILLE

Of a Survey on ^{NE 1/4} Section 3 T 2 R 12 E. of the 4 P. M. in Rock Township

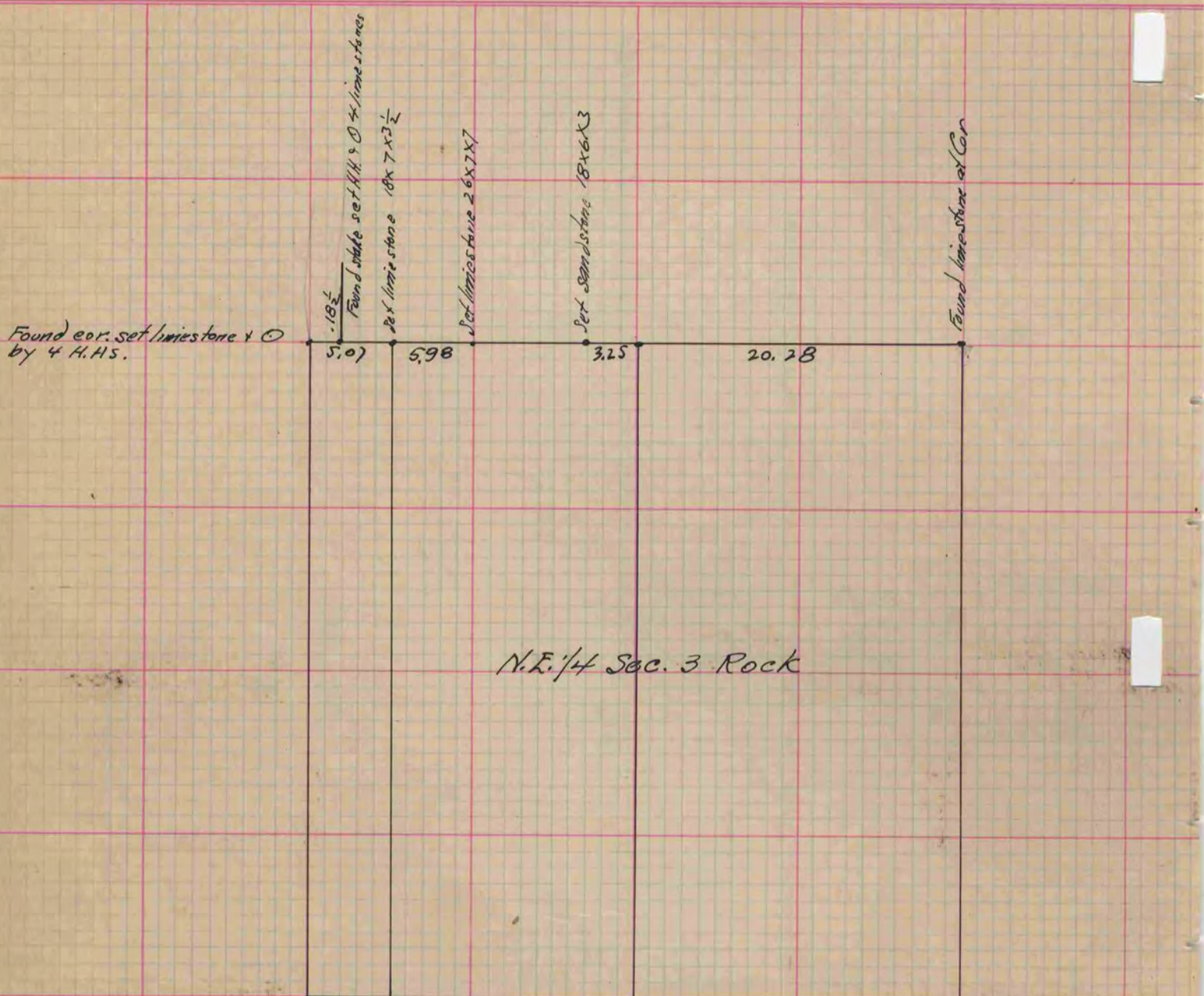
Rock County, Wisconsin, made April the 19 1892

I hereby certify that the following is a correct record of said survey as made by me.

(Signed) O. G. Bleedorn

R. H. B.

County Surveyor.



N.E. 1/4 Sec. 3 Rock

Copied from P. 366 Vol. 2. County Surveyors Record.