

478
✓2
MICROFILMED

PLAT AND RECORD

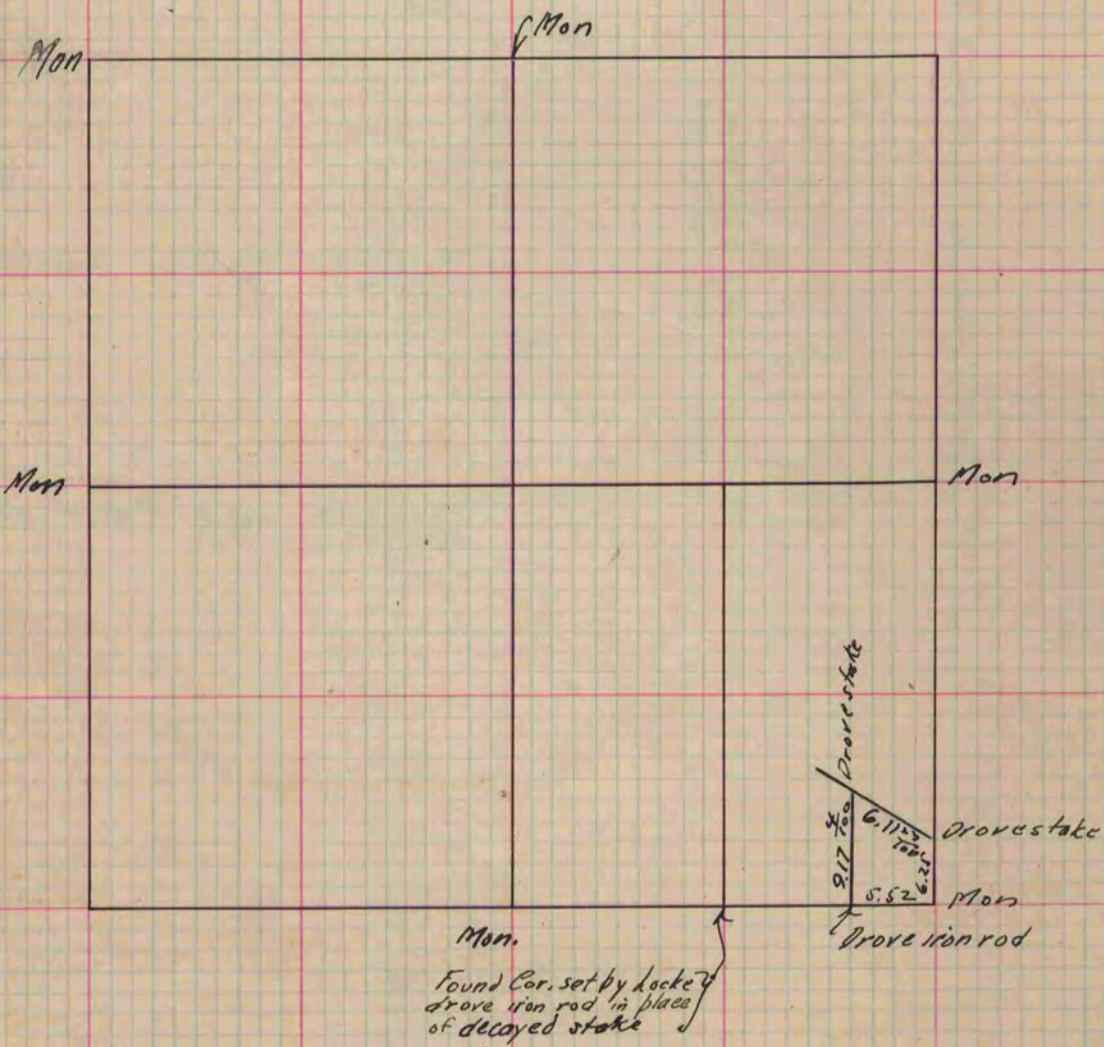
SHOWING TOWN
3 LINES 3/4 1/4 1/4

Of a Survey on Section 2 T 3 R 13 E. of the 4 P. M. in Harmony Township
Rock County, Wisconsin, made July the 6 1893

I hereby certify that the following is a correct record of said survey as made by me.

COUNTY BUILDING
CITY OF JANESVILLE

(Signed) O. G. Bleedorn
R. L. B. County Surveyor.



★ Copied from Beloit Records
12/1/75
G. Q.

Copied from P. 373 Vol. 2. County Surveyors Record.