

MICROFILMED PLAT AND RECORD

481
V-2

GREEN COUNTY

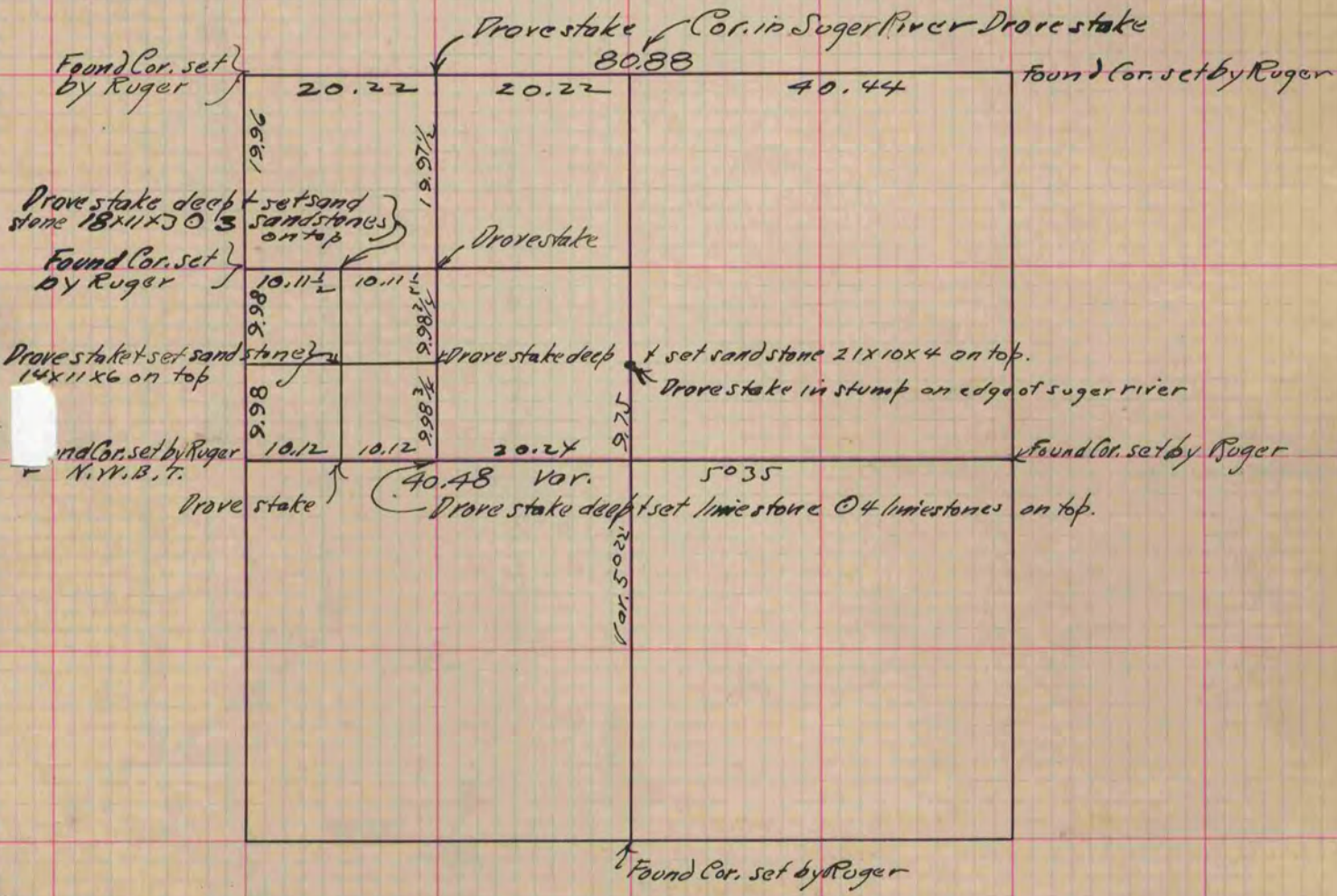
Of a Survey on Section 15 T 2 R 9 E. of the 4 P. M. in *Green County* Township

~~Rock~~ County, Wisconsin, made *Nov.* the *17th* 1893

I hereby certify that the following is a correct record of said survey, as made by me.

(Signed) *O. G. Bleedorn*
R.H.B.

COUNTY BUILDING
CITY OF JANESVILLE
County Surveyor.



See Ruger's Notes.

Copied from P. 374 Vol. 2. County Surveyor's Record