

**MICROFILMED**

# PLAT AND RECORD

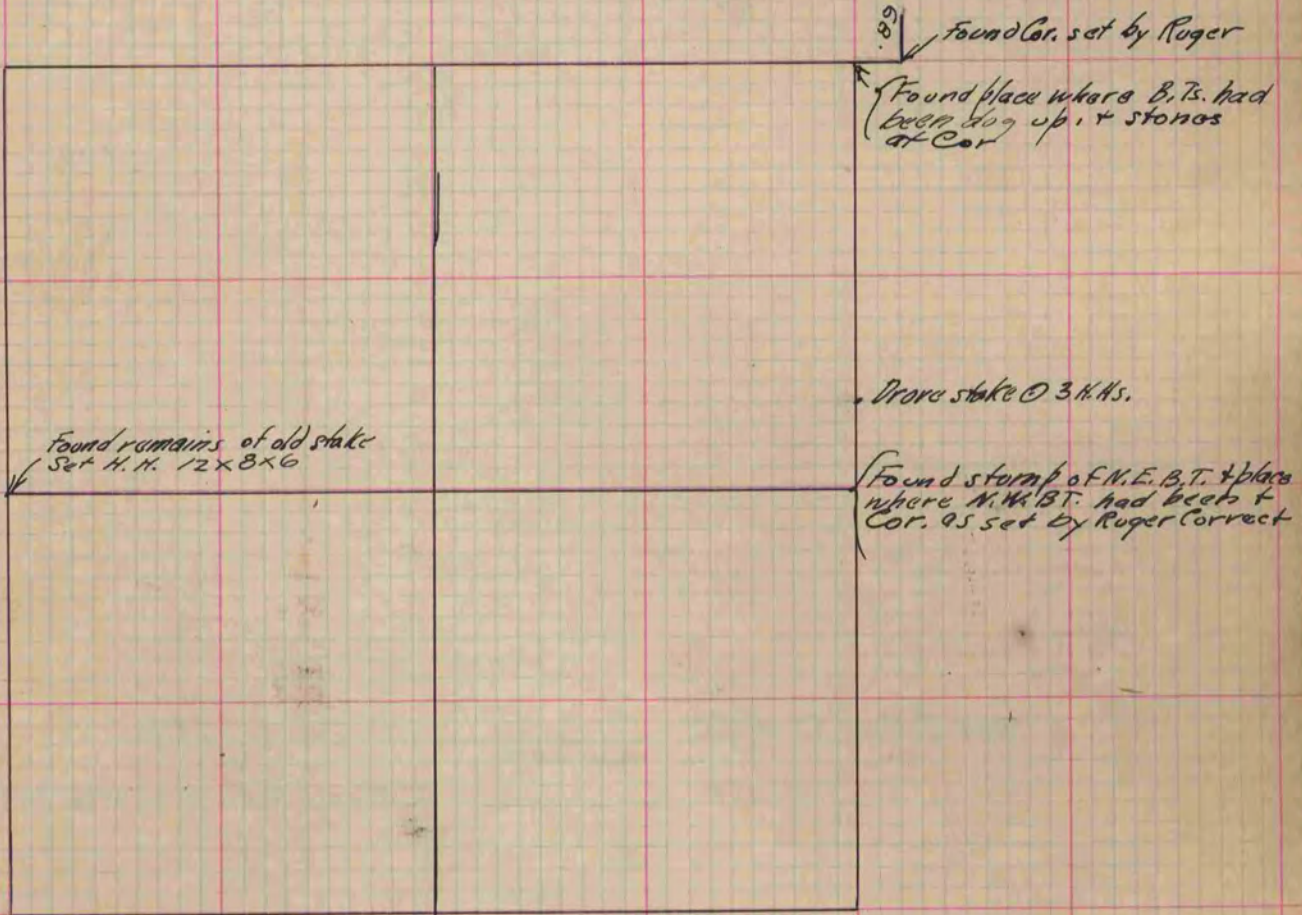
COUNTY BUILDING  
CITY OF JANESVILLE

Of a Survey on Section 3 T 3 R 11 E. of the 4 P. M. in Center Township

Rock County, Wisconsin, made Nov. the 12 1893

I hereby certify that the following is a correct record of said survey as made by me.

(Signed) O.G. Bleedorn  
R.H.B. County Surveyor.



Copied from P. 375 Vol. 2. County Surveyors Record.