

**MICROFILMED**

# PLAT AND RECORD

Of a Survey on Section 28 T 2 R 1A E. of the 4 P. M. in Bradford Township

Rock County, Wisconsin, made March the 15, 16 & 17 1894

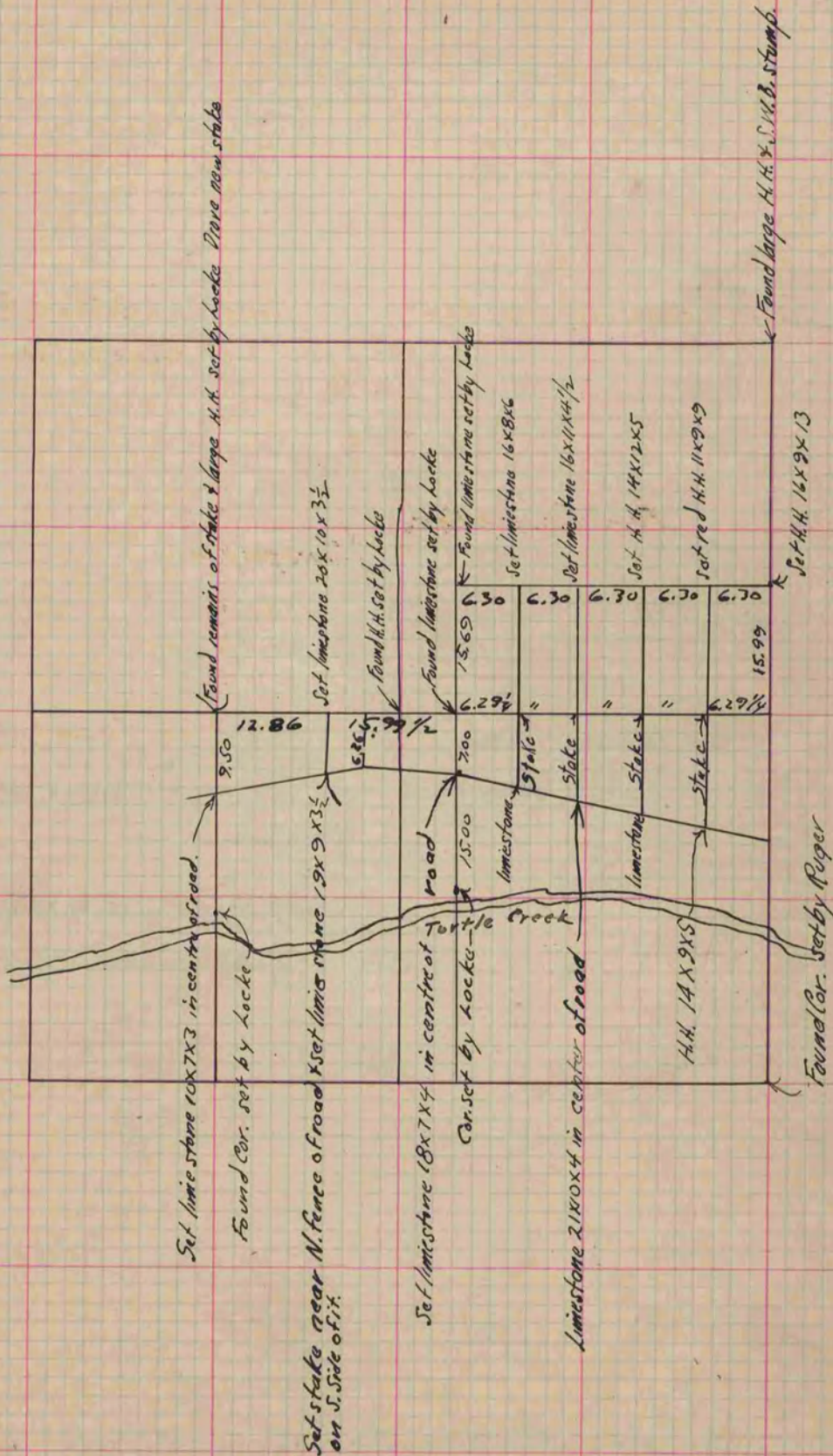
I hereby certify that the following is a correct record of said survey as made by me.

COUNTY BUILDING  
CITY OF JANESVILLE

(Signed) O. G. Bleedorn

R. H. B.

County Surveyor



Copied from P. 377 Vol. 2. County Surveyors Record