

MICROFILMED

PLAT AND RECORD

489

V-2

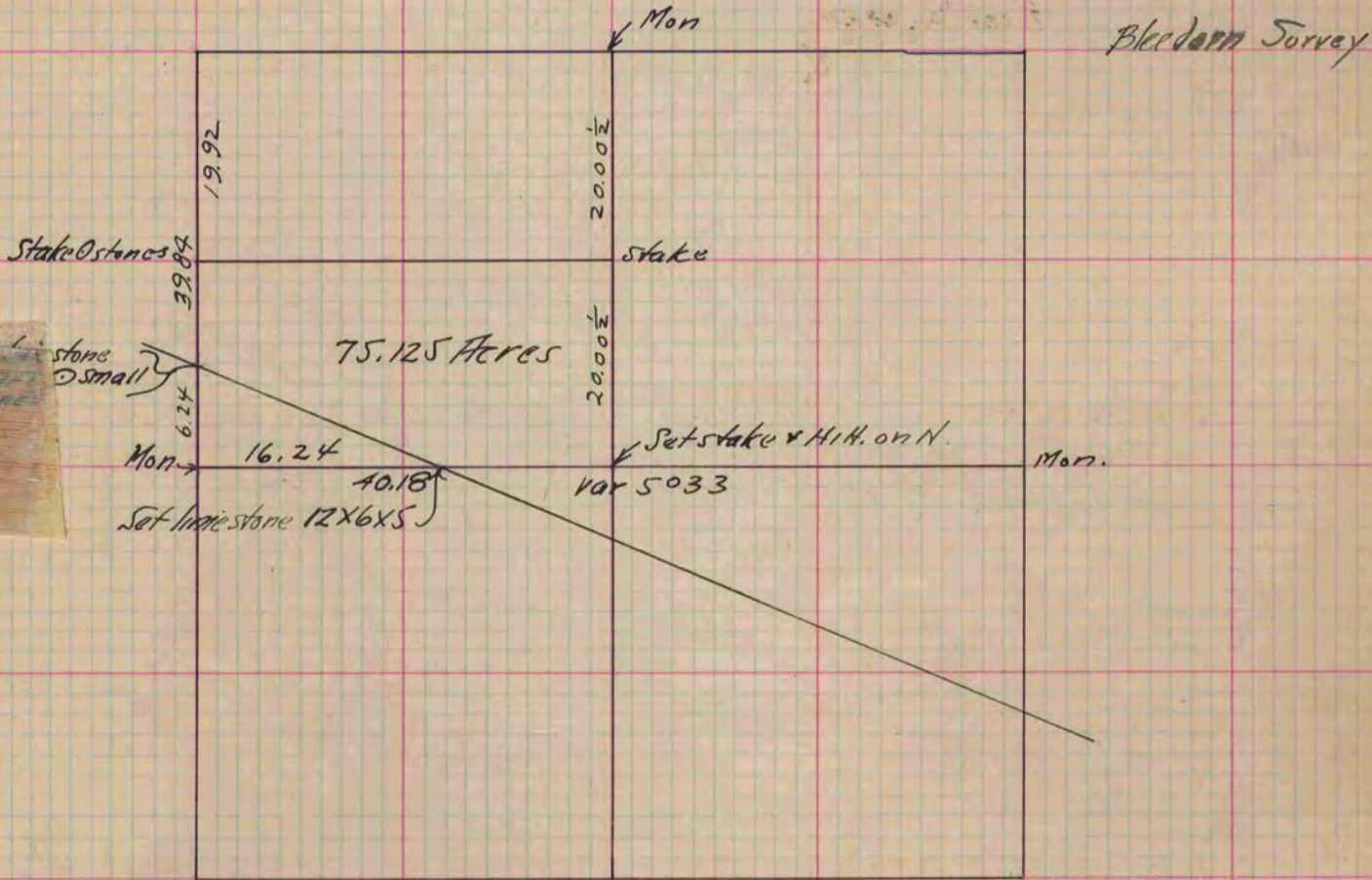
COUNTY BUILDING
CITY OF JANESVILLE

Of a Survey on Section 22 T 3 R 13 E. of the 4 P. M. in Narmory Township

Rock County, Wisconsin, made April the 17 1895

I hereby certify that the following is a correct record of said survey ~~as made by me.~~

(Signed) P. F. Brown
R. H. B. County Surveyor.



Copied from P. 378 Vol. 2. County Surveyors Record.