

1-2 MICROFILMED

PLAT AND RECORD

Of a Survey on Section 19, 20 T 3 R 13 E. of the 4 P. M. in Harmony Township

Rock County, Wisconsin, made Sept. the 21st 1895

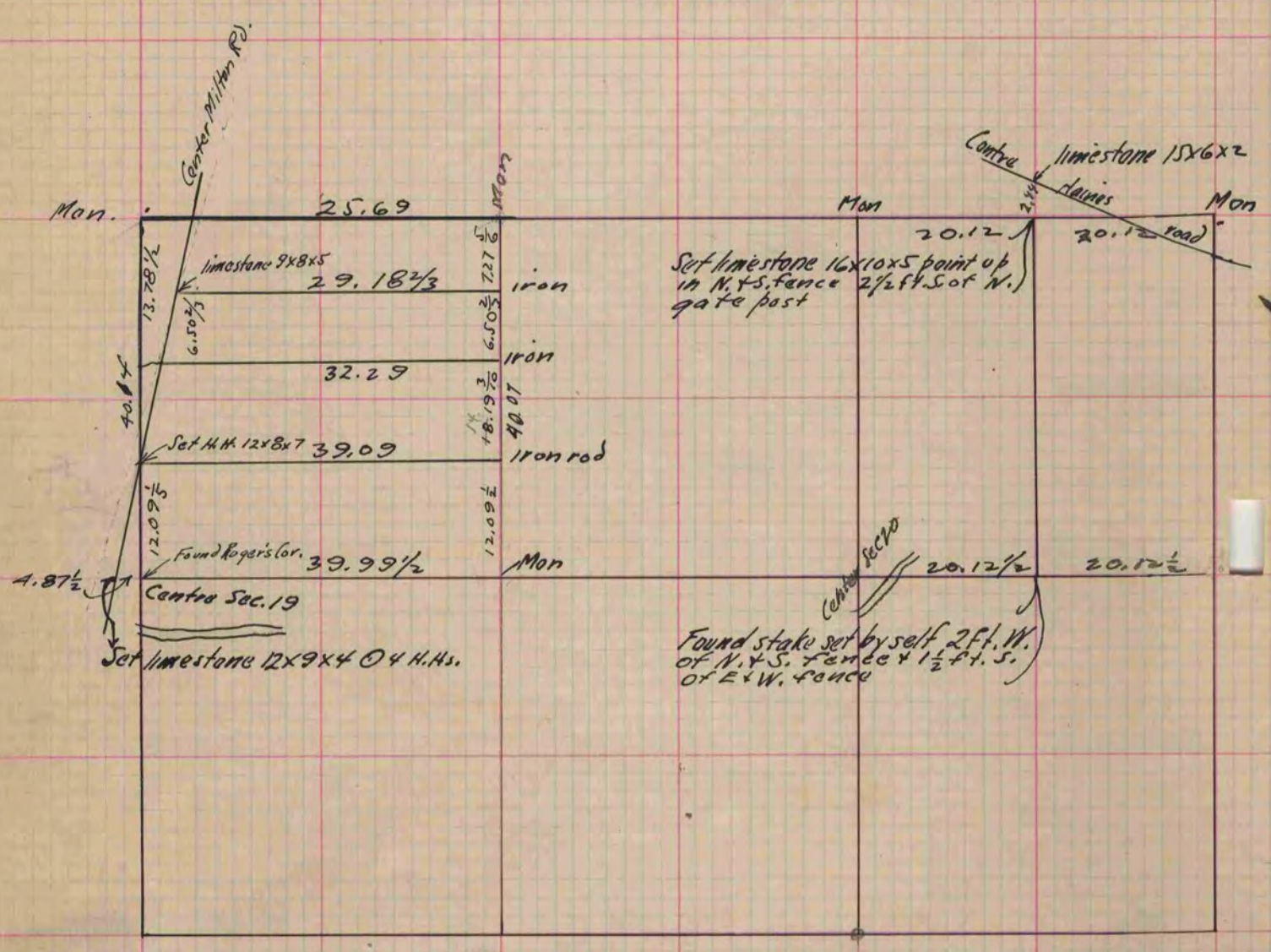
I hereby certify that the following is a correct record of said survey as made by me.

COUNTY BUILDING
CITY OF JANESVILLE

(Signed) P. F. Brown
R. H. B.

County Surveyor.

Taken from Notes of O. G. Bleedorn.



Copied from P. 381, Vol. 2. County Surveyors Record.