

MICROFILMED PLAT AND RECORD

73
V-3

Of a Survey on Section 13 T 1 R 13 E. of the 4 P. M. in Turtle Township

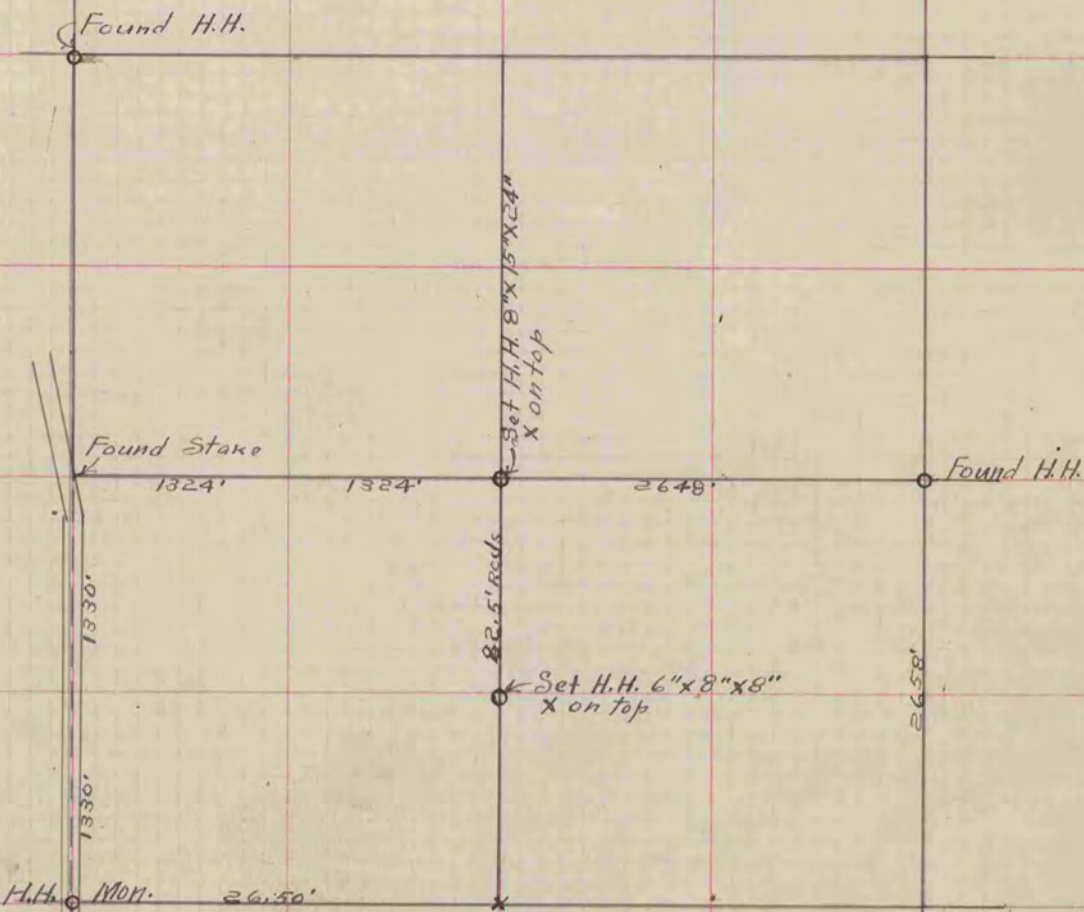
Rock County, Wisconsin, made August the 20th 1914

I hereby certify that the following is a correct record of said survey as made by me.

COUNTY BUILDING
CITY OF JANESVILLE

R. R. Caldwell

County Surveyor.



Note:- The line surveyed on the center line of sect.
is according to deed held by Chas. and Jas. Kelly
82 1/2 Rods long.