

MICROFILMED PLAT AND RECORD

87
V-3

Of a Survey on Section 14 T 1 R 12 E. of the 4 P. M. in Beloit Township

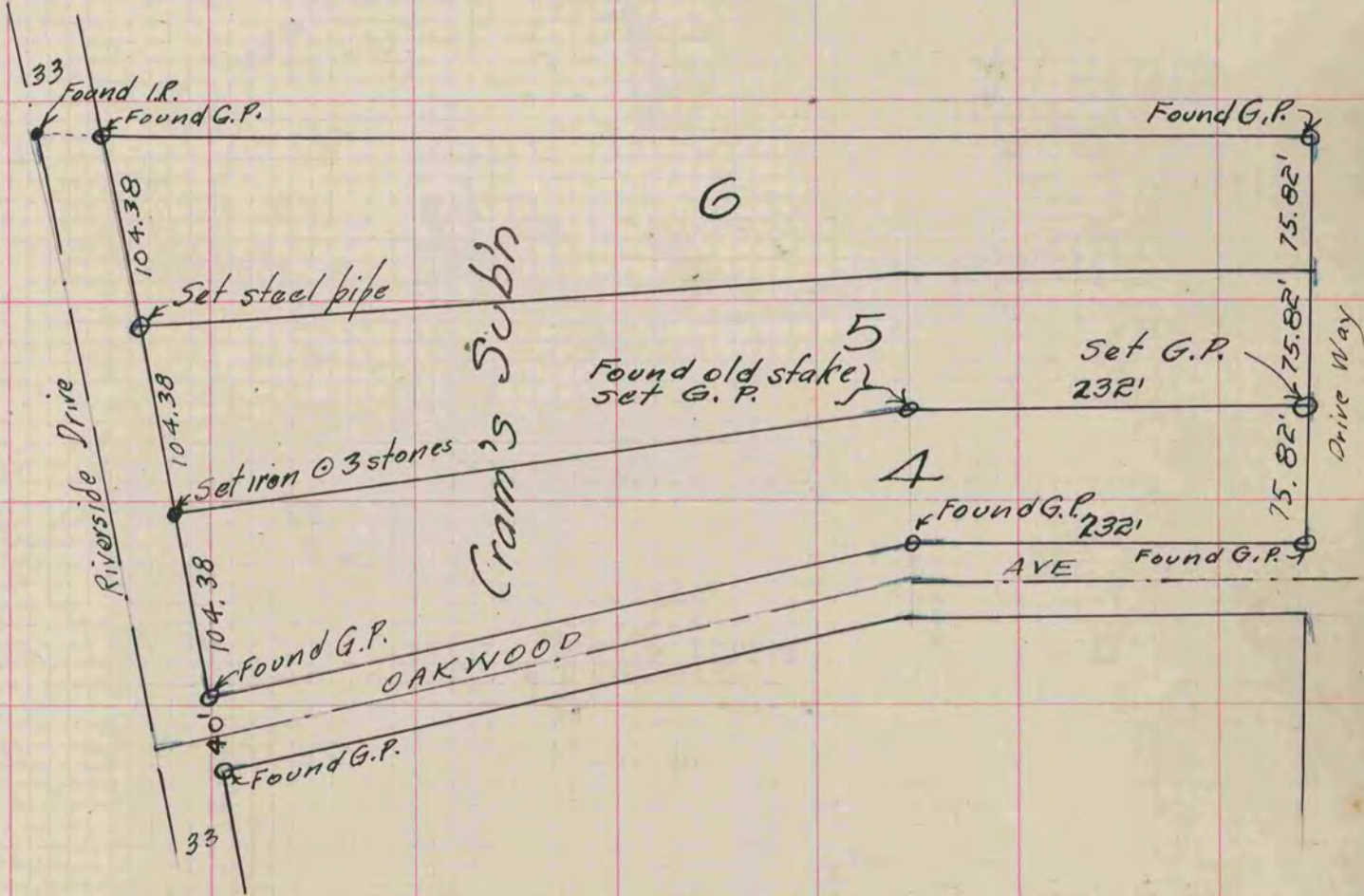
Rock County, Wisconsin, made August the 27 1919

I hereby certify that the following is a correct record of said survey as made by me.

COUNTY BUILDING
CITY OF JANESVILLE

W. B. Berman

County Surveyor.



#252
B. 7 P. 40
For W. S. Rundell