

114  
V-3  
**MICROFILMED**

# PLAT AND RECORD

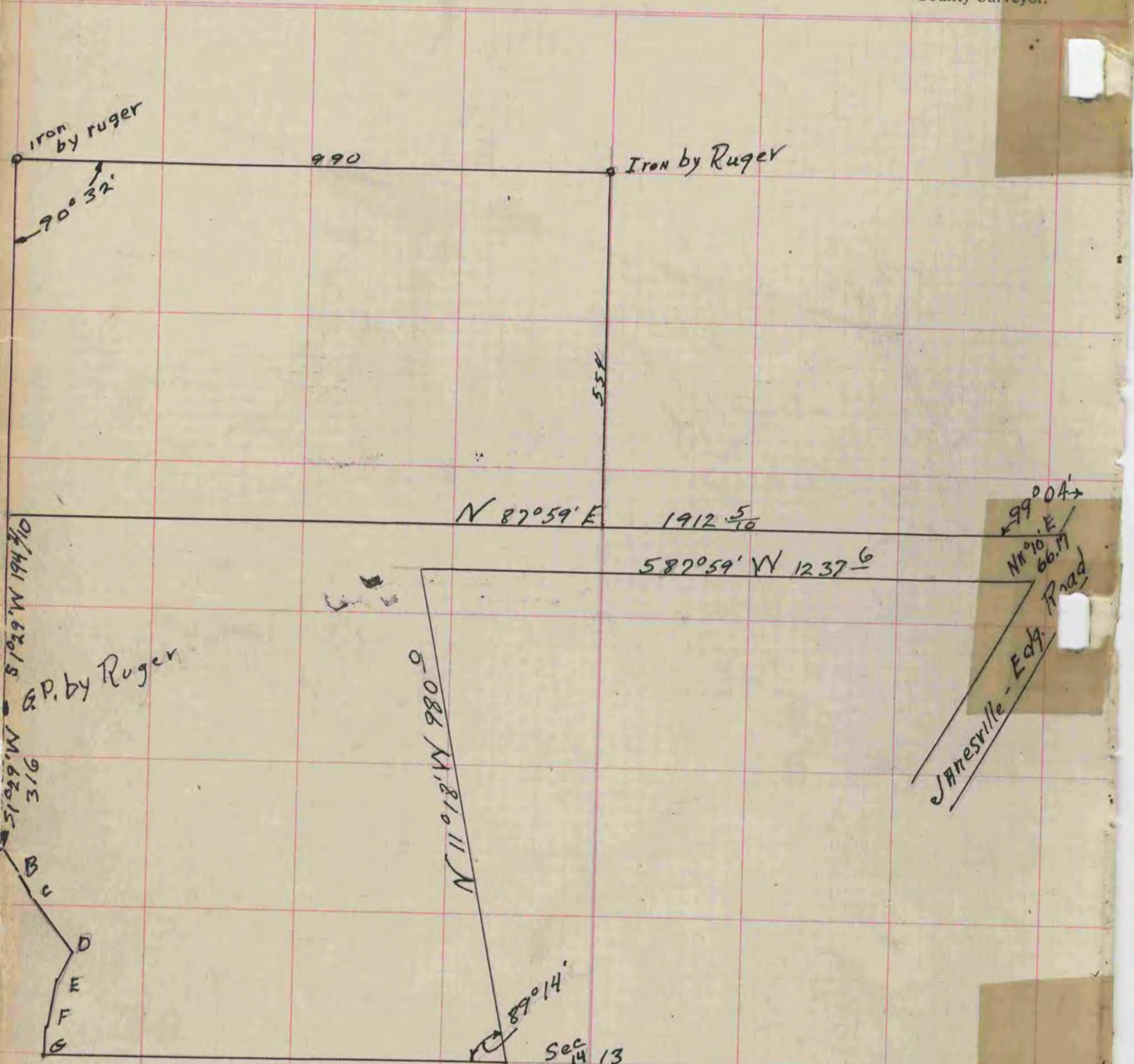
Of a Survey on Section 13-14 T 3N R 12 E. of the 4 P. M. in Janesville Township

Rock County, Wisconsin, made June the 26 1921

I hereby certify that the following is a correct record of said survey as made by me.

**COUNTY BUILDING  
CITY OF JANESVILLE**

County Surveyor.



Forward WERNIER

A-B	L	24° 11'	69'
B-C	L	32° 20'	220
C-D	L	33° 08'	285
D-E	L	26° 45'	326
E-F	L	20° 09'	432
F-G	L	17° 58'	520'

Angle Closure at G. 108° 27'