

148 V-3
PG 179 BELOIT
REC 12/12/75 DAB

PLAT AND RECORD

Of a Survey on Section 24 T 2N R 10 E. of the 4 P. M. in SPRING VALLEY Township

Rock County, Wisconsin, made FEBRUARY the 13 1932

I hereby certify that the following is a correct record of said survey as made by me.

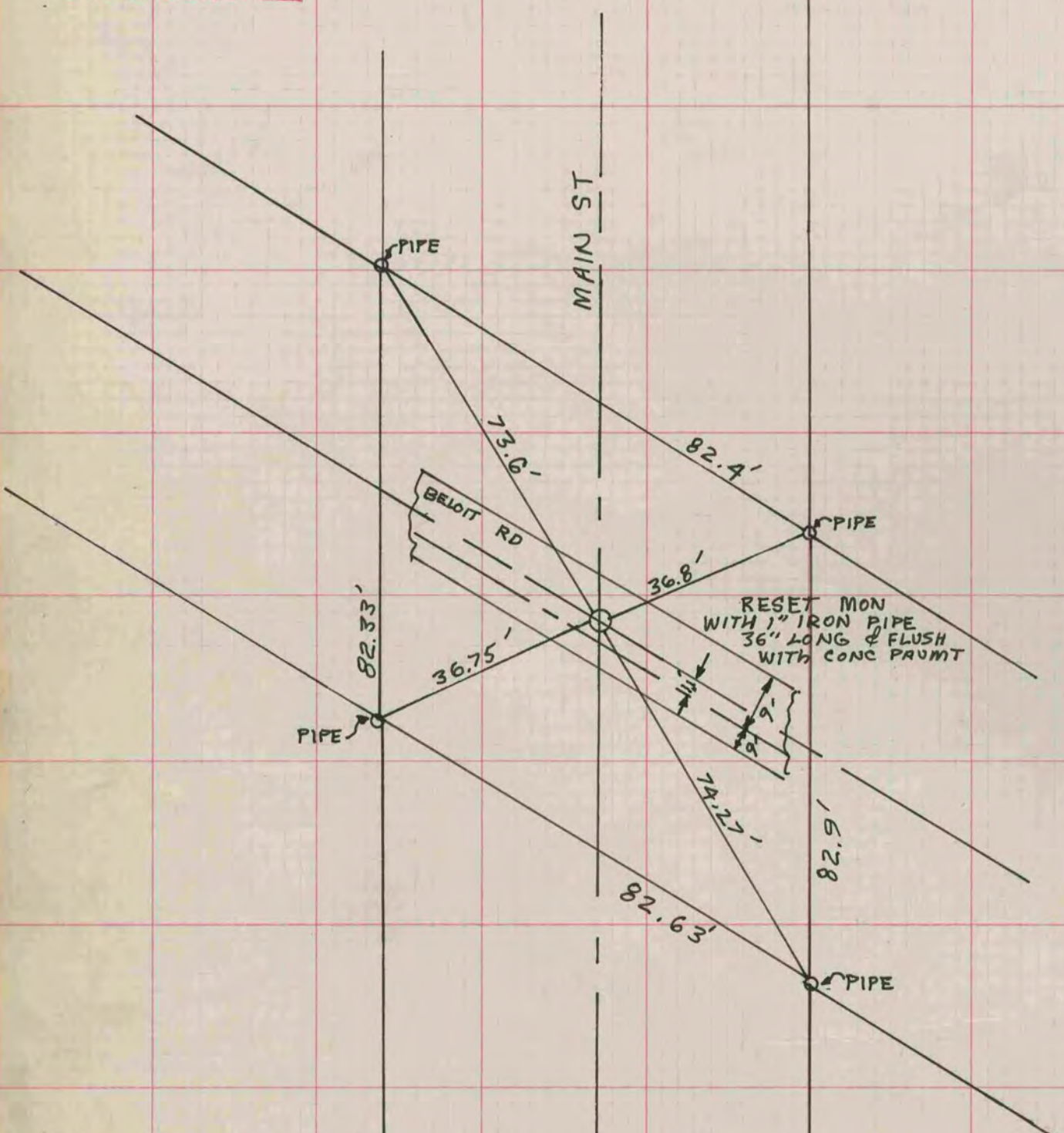
MICROFILMED

B.J. SUNNY

County Surveyor.

COUNTY BUILDING
CITY OF JANESVILLE

COPIED FROM BELOIT REC DAB 12/12/75



NOTE: THIS MON WAS REF BY
R.H. BATTERMAN ON OCT 4, 1929
PREPATORY TO PAVING HWY #92
AND RESET BY ME

Received by El