

160 V-3
PG 142 BELoit REC
12/12/75 DAB

PLAT AND RECORD

Of a Survey on Section SW/4 Sec 11 T 2 R 10 E. of the 4 P. M. in Spring Valley Township
Rock County, Wisconsin, made October the 9 1929

I hereby certify that the following is a correct record of said survey as made by me.

MICROFILMED

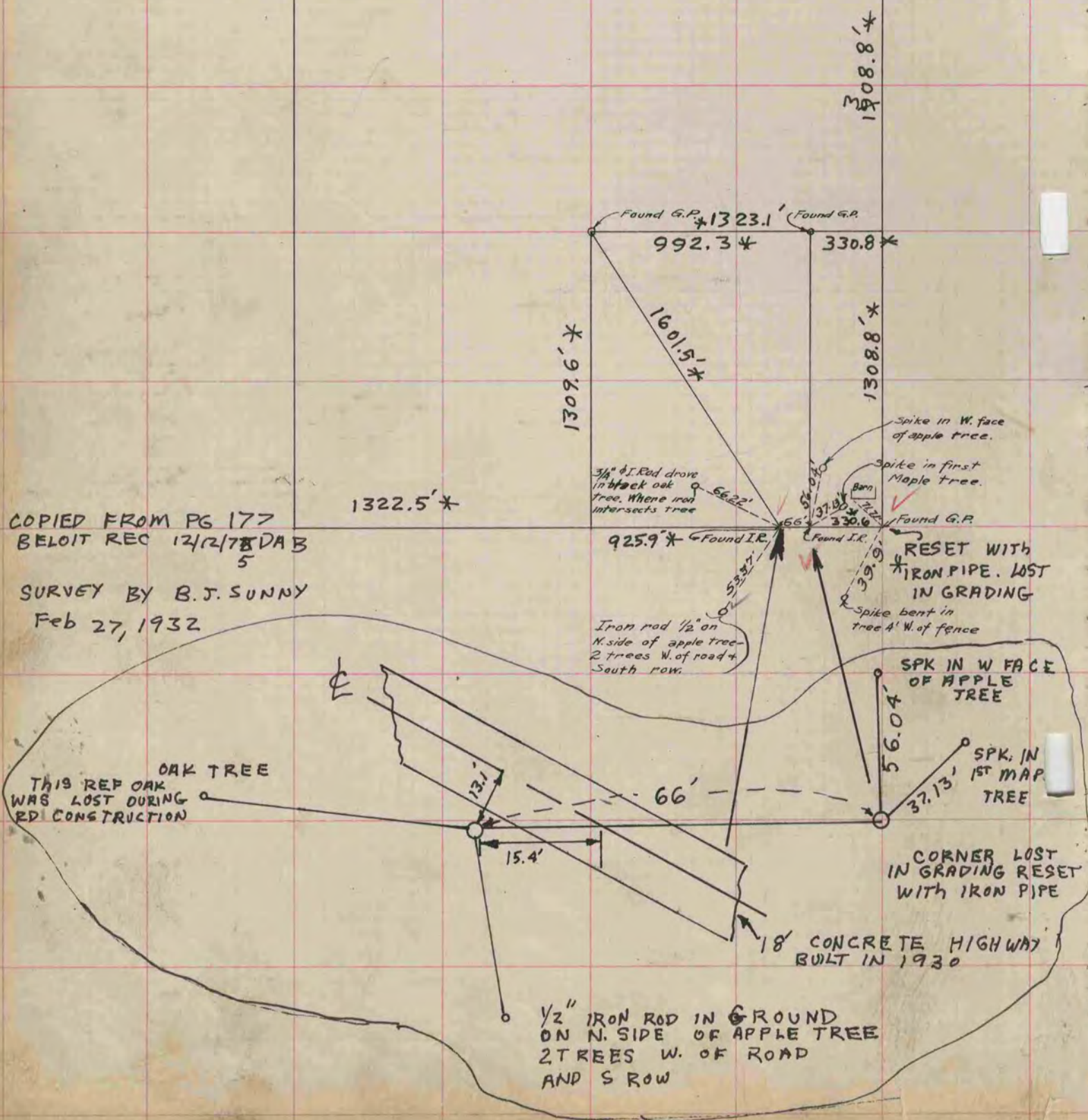
COUNTY BUILDING
CITY OF JANESVILLE

R. H. Batterman

County Surveyor.

see page 78 Volume 3

COPIED FROM PG 177
BELOIT REC 12/12/75 DAB
5
SURVEY BY B. J. SUNNY
Feb 27, 1932



OAK TREE
THIS REF OAK WAS LOST DURING RD CONSTRUCTION

3/4" I. Rod drove in black oak tree. Where iron intersects tree

Iron rod 1/2" on N. side of apple tree - 2 trees W. of road + South row.

Spike in W. face of apple tree.

Spike in first Maple tree.

Spike bent in tree A' W. of fence

SPK IN W FACE OF APPLE TREE

SPK IN 1ST MAPLE TREE

CORNER LOST IN GRADING RESET WITH IRON PIPE

18' CONCRETE HIGHWAY BUILT IN 1930

1/2" IRON ROD IN GROUND ON N. SIDE OF APPLE TREE 2 TREES W. OF ROAD AND S ROW