

156 V-3

PG 148 BELOIT REC

# PLAT AND RECORD

12/12/75 DAB

Of a Survey on Section N.W. 1/4 Sec 19 T 2 R 11 E of the 4 P. M. in Plymouth Township

Rock County, Wisconsin, made April the 7 1930

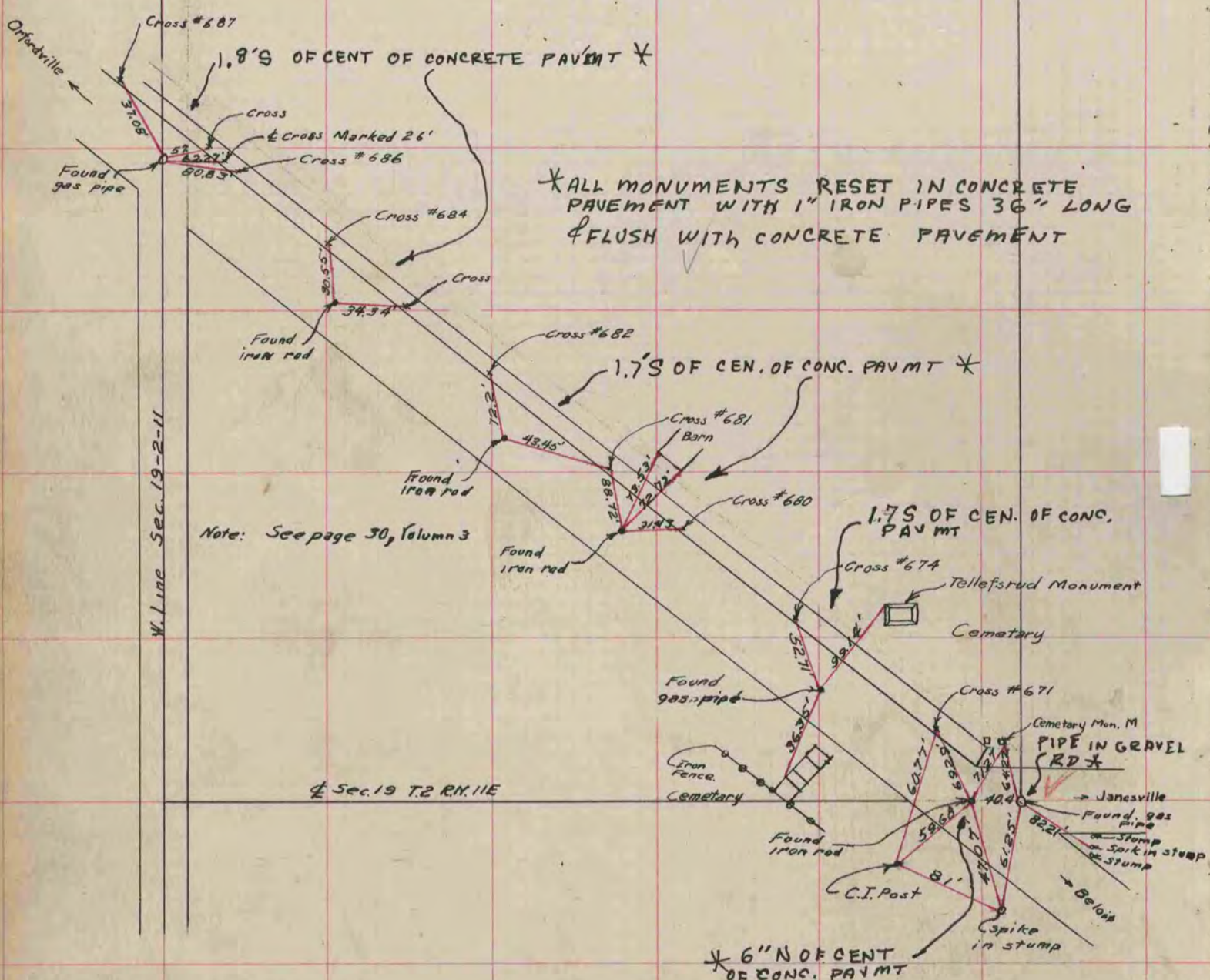
I hereby certify that the following is a correct record of said survey as made by me.

**MICROFILMED**

*R. A. Batterman*

County Surveyor.

COUNTY BUILDING  
CITY OF JANESVILLE



\* ALL MONUMENTS RESET IN CONCRETE PAVEMENT WITH 1" IRON PIPES 36" LONG & FLUSH WITH CONCRETE PAVEMENT

\* COPIED FROM PG 180 BELOIT REC  
B.J. SUNNY SURVEY 2/25/32

12/12/75 DAB